

# LIFE PREDICTION REPORT

**XYZ**  
**Date of birth: XYZ**  
**Time of birth: XYZ**  
**Place of Birth: XYZ**

Dear **XYZ**,

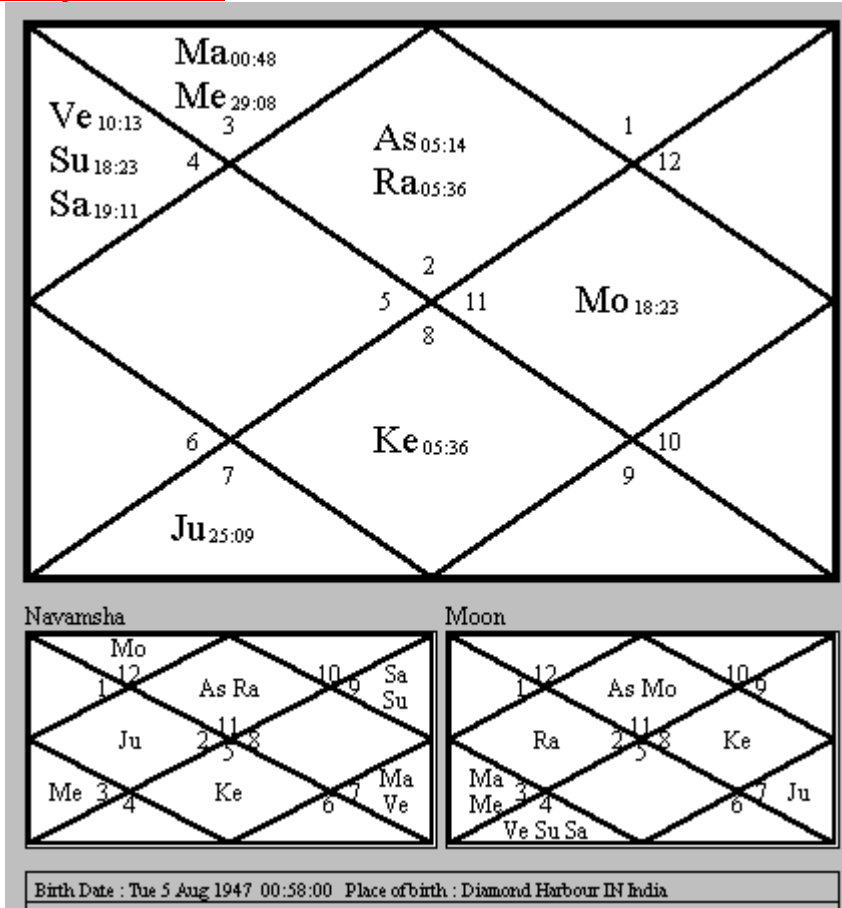
Please find our analysis for your Complete Life Prediction.

We thank you for giving us this opportunity to analyse your birth chart. The accuracy of the predictions depends on the accuracy of the time of birth given to us by you. Kindly note that as per Vedic Astrology the stars will control only 75% of your life and the critical 25% will be your own efforts. We wish you luck and pray to God that you overcome all obstacles in your life.

Best Regards  
 Satrajit Majumdar  
 CEO  
 CyberAstro.com  
 January 12, 2010  
 service@cyberastro.com

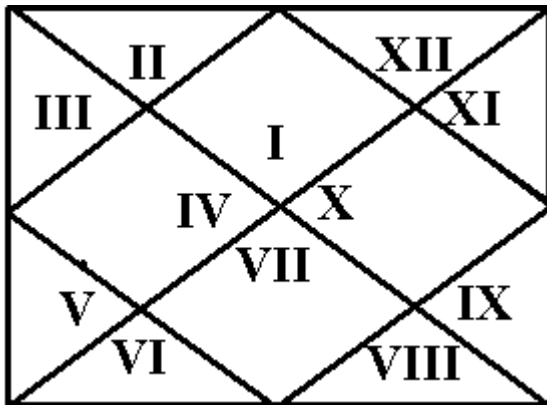
Visit us on Internet at our site <http://www.cyberastro.com> for future consultation.  
*Let's be partners in your future.*

## Horoscope Chart:



## **Birth Chart - Self-Explanatory**

Explanation of charts:



In any chart in this convention, House positions are fixed and their numbers are indicated by Roman Numerals. First house is the birth ascendant and in anti clockwise, the rest of the houses follow. Decimal digits in each house indicate the number of the zodiac signs.

## **12 Zodiac signs are numbered in the following manner.**

### **Zodiac Signs Decimal Digit in the chart**

Aries	1
Taurus	2
Gemini	3
Cancer	4
Leo	5
Virgo	6
Libra	7
Scorpio	8
Sagittarius	9
Capricorn	10
Aquarius	11
Pisces	12

### **Planetary Lord of each Zodiac Sign**

Mars (Ma)
Venus (Ve)
Mercury (Me)
Moon (Mo)
Sun (Su)
Mercury (Me)
Venus (Ve)
Mars (Ma)
Jupiter (Ju)
Saturn (Sa)
Saturn (Sa)
Jupiter (Ju)

Note: We will also use the following abbreviations for the other planets: Rahu (Ra), Ketu (Ke), Uranus (Ur), Neptune (Ne) and Pluto (Pl).

The planets by location in sign and by lordship transmit the influence of each Zodiac sign in our life.

## **Houses in your chart**

The Houses are associated with different aspects in our life. The houses are the domains of planetary actions in our life.

House No	Sign No	Sign Name
I	8	Scorpio
II	9	Sagittarius
III	10	Capricorn
IV	11	Aquarius

V	12	Pisces
VI	1	Aries
VII	2	Taurus
VIII	3	Gemini
IX	4	Cancer
X	5	Leo
XI	6	Virgo
XII	7	Libra

### **Natal status of each of the planets in your chart:**

We have listed above the natal promise of all the 9 Vedic planets in the chart based on their status in the chart. There are likely to be lot of contradictions about their significance in different aspects of life. The same planet may be beneficial for a particular aspect in one's life by it's house location but it can be inauspicious for the same aspects in life because of the lordship of houses in the chart. One planet can be beneficial for a particular aspect in life and can promise great success and at the same time another planet can be most inauspicious and promise complete failure for the same aspects in life.

Usually different astrological effects do not cancel or neutralize each other. Both the positive as well as the negative effects can affect a person's life.

How much positive and how much negative will depend on the planet's strength, it's functionality whether auspicious or inauspicious, and it's dignity in the chart, and also it's strength in the chart.

These calculations are complex and is not only made for the natal chart but is also made on the different divisional charts which are derived from the natal chart. An astrologer has to examine all these quantitative and qualitative aspects of each planet in the chart, before he can make a final judgment about each planet on how much positive and how much negative effects the planet will be responsible for different aspects of life in a person. His experience will also play a key role to arrive at a final judgment.

We give below in a table the strength of each planet in the chart and what will be the overall role of the planet in a person's life as per the astrologer's judgment.

Planet	Dignity (Based on Sign location)	Lordship	Functional Status Auspicious /Inauspicious	House Location	Planet Natal Strengths			Final Judgement by Astrologer
					Sadbal	Vimsopakabal	Ashtakavarga Strength	
Sun	Neutral	IV	Neutral	III	1.12	15	5	Excellent
Moon	Enemy	III	Inauspicious	X	1.34	9	4	Mixed
Mars	Grt. Enemy	VII & XII	Inauspicious	II	1.36	10	2	Challenging
Mercury	Own	II & V	Auspicious	II	1.22	17	4	Out Standing
Jupiter	Neutral	VIII & XI	Inauspicious	VI	0.73	10	5	Most Challenging
Venus	Grt. Enemy	I & VI	Auspicious	III	1.56	12	3	Very Good
Saturn	Grt. Enemy	IX & X	Most Auspicious	III	0.98	11	3	Excellent
Rahu	Exalted	----	Auspicious	I	---	17	---	Excellent
Ketu	Exalted	----	Inauspicious	VII	---	8	---	Very Good

### **Explanation of Natal status of Planet Table**

### **A) Dignity:**

Dignity of planet is based on its relationship with the sign where it is located in the natal chart: The dignity largely decides what kind of results the planet will give in its period /sub-periods/sub-sub periods. If the dignity is good then there are bound to be good results. If the dignity is not good then there are bound to be some bad results. No matter whether the planet is functionally benefic/malefic or strong and weak in different strength calculations. The dignity of any planet can be any of the following in descending order of the planet's ability to give good results during its period/sub-periods/sub-sub periods.

- 1 Exalted: results most outstanding
- 2 Mool trikona: results excellent
- 3 Own: results good in general
- 4 Great Friend: Generally good results
- 5 Friend: Mixed but generally ok
- 6 Enemy: Mixed but generally malefic
- 7 Great Enemy: Generally malefic
- 8 Debilitated: most challenging

### **B) Lord ship and functionality:**

Lord ship of each planet as per different ascendants in the natal chart indicates functionality of the planet for different aspects in our life throughout our life. Functionality can be Auspicious, Inauspicious, Neutral, Most Auspicious or most Inauspicious

### **C) Different Strength calculations of the Planet and their significance:**

**1 ShadBal:** This is the absolute modular strength of the planet and signifies the quantum of its effects in our life irrespective of the functional status or dignity. A Benefic planet with low Shadbal must be strengthened with Gem therapy to make it more effective. A malefic planet with high shadbal must not be strengthened with Gem therapy because its malefic effects will increase also Instead they must be harmonized with Yantra or propitiated with Yagnas and Mantras. This strength is very important for astrologer while he recommends astrological remedies. The minimum effective shadbal should be 1.0. The maximum can go up to 2.5 in a chart.

**2 Vimsopak Bal:** Vimsopak Bal is calculated based on the dignity of the planet in 16 divisional charts computed from the Natal chart. Each divisional chart signifies a specific aspect of life. For example Navamsa chart signifies spouse and marital life. The Dasamsa chart signifies profession and career. The maximum Vimsopak bal of a planet can be 20, which will signify the planet will be beneficial for most aspects in life. An average strength of 10 will signify the planet will have mixed effects for different aspects of life. Less than 10 will signify the planet will be mostly inauspicious in most aspects in our life.

**3 Ashtakbarga Natal strength:** This signifies the potential of the planet to deliver positive results during transit in relation with other planets positive and negative effects. The maximum strength can be 8, which signifies the planet can give outstanding results in transit. For Saturn and Mars, if the Ashtakbarga strength is more than 3 units, it will mean it will give generally positive results. For remaining 5 planets (excluding Rahu/Ketu) the natal strength must be 5 units or more to have the potential to deliver beneficial results in relation to all other planets.

Your astrologer will consider all these factors before he makes his final judgment. His judgment will be as follows:

- 1 Outstanding
- 2 Excellent
- 3 Very good

- 4 Good
- 5 Mixed
- 6 Challenging
- 7 Most challenging

### **Significance and status of each house in the natal chart:**

In the explanation of your horoscope chart, we have indicated the different houses in your chart. It is the houses which relate to different aspects in a person's life. A house is most influenced by the planets located in a particular house. Next the house is influenced by lord or the ruling planet of a particular house. A house is also influenced by the planets which aspect the house in the natal chart. There are 2 different methods to measure the strength of each house in the chart quantitatively. Given below are two tables. Table 1 indicates which aspects of life are signified by a specific house and also the natural planet(s) signifier (Karaka) of each house.

Table 2 gives each house and its strength as well as the planets which influence each house in your chart either by location, lordship or by aspects in your chart. It also gives the final judgment of the astrologer and its overall status in your life for each house in your natal chart.

Table 1

House Number	Sign No	Sign Name	Natural Signifier	Attributes of each of the 12 house
I	8	Scorpio	Sun	Physical Self, appearance, basic disposition, behavior, general well being.
II	9	Sagittarius	Jup	Finances, liquid assets, accumulation of wealth, general family happiness, food & drink, speech, spiritual status of knowledge, precious metals/gems, concentration, truthfulness etc.
III	10	Capricorn	Mar	Determination, courage, physical strength, siblings, friends, neighbors, art, dance, drama, music, voice, singing, memory, communications, writing etc.
IV	11	Aquarius	Mon	Feelings, mother, the home, emotions, and happiness in general, academic education, knowledge, fixed assets, hobbies, leisure time, comforts, houses, boats, vehicles.
V	12	Pisces	Jup	Intelligence, progeny, pregnancy, inclination towards education/spiritual authorship.
VI	1	Aries	Sat, Mar	Services & defense, health or short term diseases, competition, rivals, opposition, litigation, enemies, intimidation, calamities from the opposite sex etc.
VII	2	Taurus	Jup	Marriage, love affairs including extramarital, cohabitation, marriage like relationships, length of mate's life, business partnerships, trade, foreign residence etc.
VIII	3	Gemini	Sat	Unknown & the chronic, longevity, hidden things, scandalous behavior, embarrassment, shyness,

				accusations, desire for knowledge of the unknown or mystical matters, extravagance, unearned wealth such as lotteries, wills, legacies, money from insurances claims etc.
IX	4	Cancer	Jup, Sun	Luck & knowledge, god, guru, philosophy, religion, father, relationship with father, bosses, ethics, law, dharma (right action), long distance travel, good fortune, spiritual knowledge & practices.
X	5	Leo	Mer, Jup	Career, life purpose, profession, fame, father's reputation or position in the world, father's health and longevity, righteous action, compassions etc.
XI	6	Virgo	Sun	Opportunities, cash flow, profits, fulfillment of dreams and desires, hopes, friends, wishes elder sibling, influential friends etc.
XII	7	Libra	Jup, Sat	Liberation, enlightenment, sexual pleasures, detention, confinement (hospitals, prisons, long term mediation etc.) pilgrimages or journeys to foreign land and expenditure: house of decrease.

**Table 2  
The House Table**

House No	Planets Located	Lordship	Planets Aspected	House Strength (AB) X	House Strength (BB) Y	Astrologer Remarks
I	As, Ra	Ve	Ke	35	9.99	Outstanding
II	Ma, Me	Me	Ju	20	9.09	Mixed
III	Su, Ve, Sa	Mo	Ke	28	8.43	Excellent
IV	---	Su	Mo	30	7.18	Excellent
V	---	Me	Ma, Sa, Ra	24	7.99	Good
VI	Ju	Ve		28	7.62	Very good
VII	Ke	Ma	Ra	25	8.13	Challenging
VIII	--	Ju	Ma, Me	25	4.73	Most Challenging
IX	--	Sa	Su, Ma, Ve, Sa, Ra	20	5.20	Most Challenging
X	Mo	Sa	Ju	32	5.23	Good
XI	--	Ju	Ke	36	5.12	Good
XII	--	Ma	Ju, Sa	34	7.63	Good

**Remarks:**

If the A. B. score is 28 or more, that house and the aspects of life, the house signifies flourish well. Greater the score, better the results. If the A. B. score is less than 28, the individual faces difficulties and suffers in life in those aspects, which the house signifies. The lower the score greater will be the difficulties and obstacles in life.

House strength by method B (Bhava Bal) signifies if the score strength of a house is more than 7.5, the aspects signified by that house flourishes more in our life.

Greater the score, better the results. The lower score greater will be the difficulties and obstacles in life. Final remark is the considered judgment about each houses made by our astrologer, who has analysed your chart.

## **The natal promise of different planets in your chart:**

### **Sun:**

**Status: Lord of 4<sup>th</sup> house is located in 3<sup>rd</sup> house, Cancer.  
The dignity of Sun is neutral.**

Sun will primarily give the effects of 3<sup>rd</sup> house. 3<sup>rd</sup> house is the house of efforts and initiative. It is also the house of younger siblings and friends. Sun is located in 4<sup>th</sup> house, the house of domestic bliss and harmony. Being the ruler of 4<sup>th</sup> house in 3<sup>rd</sup> house indicates that she may have to suffer or may get neglected on account of her siblings. Land or wealth will come strictly by one's own efforts or initiatives. However this is not much favorable for accumulation of fixed assets in life because 3<sup>rd</sup> house is in 12<sup>th</sup> house from 4<sup>th</sup> house. The effect of Sun in 3<sup>rd</sup> house will be that she will be courageous, bold and will fight for her own rights. She will be firm and stable in her desires. She will be motivated to pursue her desires and will succeed with perseverance. There will be little happiness with brothers. The next born sibling is likely to be male. Sun is supposed to be functionally neutral for her natal chart.

### **Moon:**

**Status: Lord of 3<sup>rd</sup> house, Cancer is located in 10<sup>th</sup> house Aquarius.  
The dignity of Moon is Enemy.**

This will signify that she will work hard to establish her status even if she had been a pure home maker. She could be successful if she had pursued a career in music, dance, drama or literary field. She might have to travel short distances in pursuit of her career. She would have good income if she had pursued an independent career in her life. Her siblings are likely to be all well settled in their careers.

Moon in your chart is a waxing Moon. Waxing Moon in 10<sup>th</sup> house is a fortunate placement as significations of both Moon and the 10<sup>th</sup> house flourish. There should be achievement and success very early on in a person's professional life. She might have enjoyed a fine reputation or even fame in her childhood or in her teens. Her career may change throughout her life but it will always be related to activities benefiting or enlightening or serving the masses, even as a full time home maker, it will be dedicated to serving her family. In some way she may be involved in dramatic art or performing arts. She will have an intuitive sense on how to please groups of people and how to cater to their emotions and feelings starting from her earliest childhood when she had to cater to her 7 male sibling being the single woman among the group. This position also benefits one's academic life. Moon is also aspected by Jupiter from her 6<sup>th</sup> house indicates that she is likely to be brilliant and highly successful in whatever career she chooses for herself. Moon in this house should also make kind and warmhearted, though externally she may appear to be very tough and result oriented. Moon is supposed to be functionally inauspicious for her chart.

### **Mars:**

**Mars is lord of 7<sup>th</sup> and 12<sup>th</sup> house in her natal chart and is placed in her second house Gemini.  
The dignity of Mars in her natal chart is "Great Enemy"**

When lord of 7<sup>th</sup> house is placed in her 2<sup>nd</sup> house, it signifies that she will get wealth from her spouse or spouse will have good earning ability. Wealth can also come from business partnerships and it indicates generally stable and happy family life.

When lord of 12<sup>th</sup> house is placed in her 2<sup>nd</sup> house, it signifies the opposite, financial losses, unhappy family life, and she can be very harsh in her expressions. She can have poor vision or poor hearing in her right eye or right ear. She may not have good diet and food.

Mars in second house in particular it signifies the person can amass wealth but only through hard work or through cruel and unethical means. She may not acquire a high education. She can be quarrelsome, very harsh in her speech. She may speak falsehoods and family life will be disturbed. She may be irritable and short tempered. There can be defects in her right side vision or in her right side hearing. She may be forced to mix with not so honorable people in her life. Mars is functionally inauspicious planet in her chart.

### **Mercury:**

**Mercury is lord of 2<sup>nd</sup> and 5<sup>th</sup> house in her chart and is located in her 2<sup>nd</sup> house, Gemini.**

**The dignity of Mercury in her natal chart is “ Own”**

When lord of 2<sup>nd</sup> house is placed in 2<sup>nd</sup> house itself, it signifies that she can gain wealth effortlessly, her career can be in either banking or in education. She will be an excellent speaker, learned, knowledgeable, and will enjoy a happy family life. She will have powerful imagination, attractive face, good vision, and she will have excellent dietary habit.

When lord of 5<sup>th</sup> house is placed in 2<sup>nd</sup> house, it signifies great intelligence, learned, knowledgeable, career in education, good speaker, may be a good mathematician or even astrologer. She will have a large, prosperous and happy family life. She will enjoy good food. She may earn money through temples or teaching religious techniques.

Mercury if unafflicted in 2<sup>nd</sup> house, but in her chart it is severely afflicted by Mars. The good effects of lordship of Mercury given above will be somewhat restricted. Mercury is functionally an auspicious planet in her chart.

### **Jupiter:**

**Jupiter is the lord of 8<sup>th</sup> and 11<sup>th</sup> house in her chart and is located in the 6<sup>th</sup> house, Libra.**

**The dignity of Jupiter in her chart is “ Neutral”.**

When lord of 8<sup>th</sup> house is located in 6<sup>th</sup> house, it indicates bad health, but will be always troubled by her enemies and competitors. It indicates day to day challenges in the workplace. Will be unlucky with servants and domestic help. It is also not favorable for longevity.

When lord of 11<sup>th</sup> house is located in 6<sup>th</sup> house, it indicates difficulty in fulfilling desires and ambitions. No financial windfalls or unexpected financial gain from lottery or inheritance. No happiness or gain from elder siblings. However she may gain through nursing home or health related ventures.

Jupiter in 6<sup>th</sup> house indicates that even if there are enemies, she will be able to defeat them and will gain an upperhand over them. She will have a good job and will get along well with her coworkers. There will be very few children, and she will be somewhat unlucky in her life. Jupiter is functionally inauspicious for her chart.

### **Venus:**

**Venus is the lord of ascendant or first house and is also the lord of her 6<sup>th</sup> house and is located in her 3<sup>rd</sup> house, Cancer.**

**The dignity of Venus in her chart is “ Great Enemy”**

When Lord of Ascendant is in 3<sup>rd</sup> house, it signifies there will be benefits from siblings specially from younger siblings. She will be courageous and adventurous. Success will also largely dependent on her own efforts. She will have very strong desires for all material pleasures . She may have interest and also possible career in music, dance or drama.

When lord of 6<sup>th</sup> house is located in 3<sup>rd</sup> house, it signifies, there will be little happiness from siblings. She may be quarrelsome and ill tempered. She will have too many desires but she will face lot of obstacles to fulfill her desires. She may have a career in nursing or medical profession. She may not have any appreciation for fine arts or she will have great difficulty in pursuing such interest. She may lack initiative and courage to fulfill her desires in life.

Venus in 3<sup>rd</sup> house definitely indicates talent in art, music, dance or drama. There will be happiness from siblings. However Venus in 3<sup>rd</sup> house may give strong sexual desires, which can make her promiscuous. She will have strong material desires which should get largely fulfilled. Venus is functionally auspicious for her chart.

### **Saturn:**

**Saturn is the lord of 9<sup>th</sup> house and lord of 10<sup>th</sup> house in her chart. Saturn is located also in the 3<sup>rd</sup> house of her chart.**

**The dignity of Saturn in her chart is “Great Enemy”**

When lord of 9<sup>th</sup> house is located in 3<sup>rd</sup> house it signifies happiness from siblings Appreciation and talent for all artistic activities like music, dance and drama. Efforts should succeed with ease. Will live life to the fullest, exciting adventures. Will undertake many short and long distant journeys in life. Should be lucky, fortunate, religious, spiritual. Father will be wealthy, powerful and long lived.

When lord of 10<sup>th</sup> house is located in 3<sup>rd</sup> house, it signifies career in music, dance, or drama. Siblings may be instrumental or involved in her livelihood in some way. Career advances will take place only through hard work and self effort. Many short journeys, career can be in literary or communications field.

Saturn in 3<sup>rd</sup> house indicates that there will be very few or even no younger siblings. Even if there are then her relationship with them cannot be cordial. She will have a great desire to succeed in whatever field she chooses, but success will only come after initial failures provided she persists and work hard to achieve success. Her success will generally come late in her life. In her work she may have to do hard physical labour.

She may be highly conservative in her action and may lack the desired motivation required or single minded desire to succeed, which can then eventually make her lead an inactive or a stagnant life.

Saturn is considered to be functionally most auspicious planet for her chart and is called Yogakaraka for her chart. The planet which is supposed to bring all the opportunities in her life.

### **Rahu:**

**Rahu is located in her Ascendant Taurus.**

**The dignity of Rahu in her chart is “Exalted”**

When Rahu is located in her first house or Ascendant and is exalted, it signifies that in some ways she must be famous in her social circle. She should have a strong personality and should be a leader in her field. She will easily win over her enemies and competitors.

She should be both wealthy as well as spiritual. She will have very attractive appearance and will be very intelligent. However her married life will suffer and there will be constant ups and downs in her marriage either because of her own pride and ego or because of peculiar nature of her spouse. Rahu is functionally auspicious for her chart.

**Ketu:**

**Ketu is located in her 7<sup>th</sup> house, the house of spouse and partnership. The dignity of Ketu in her chart is exalted.**

This signifies that married life will be harmed, as there will be constant ups and downs with her spouse. The spouse may be especially intelligent, psychic, and special. He may also be ascetic and extremely detached and of discriminating disposition. The spouse may die earlier and under unusual circumstances. Ketu is functionally inauspicious for her chart.

### **Special Significance Of Rahu/Ketu Axis**

The natal promise of different planets through the looking glass of "Nakhatra" based on the degree of the planet in a particular Zodiac Sign.

360 degrees of the Zodiac is divided into 12 zodiac signs each of 30 degrees. The same 360 degrees of the Zodiac is also divided into 27 Nakhatra divisions each of

### **NORTH NODE IN THE FIRST HOUSE - SOUTH NODE IN THE SEVENTH HOUSE**

If the North Node is in the first house, the person's greatest growth, evolution, and fulfillment come through developing his Own personality and personal power. He has been too dependent on marriage partners in past lives, and has relinquished his individuality and authority to his mates. The person must follow his instincts and impulses, and learn to care for his own destiny. He must not allow himself to be dominated, manipulated, or overshadowed by the feelings and wishes of others. There is a great likelihood that the person will become enmeshed in an early marriage and soon feel smothered and controlled. He may (with great effort, pain, and struggle) eventually free himself in order to develop and nurture his own personality, ambitions, and self-expression. Then the possibility of growth, satisfaction, and a sense of accomplishment becomes a reality.

The person should beware of compromising too quickly and easily. He must work on confidence and self-reliance, and use his own judgment. He will be happier and healthier when he learns to value his own opinions and stand up for himself. The person gains a great deal from decisiveness and dynamic action, and should therefore take the initiative as much as possible. Men or women with this North Node placement are well-advised to cultivate and nurture their masculine side. The person should be more assertive, and express his emotions when provoked. He must not, in the event of anger or irritability, give in to his habitual patterns of suppression and self-denial. In this lifetime his individuality, self-esteem, and ego needs are of the essence.

The person must let go of his compulsion to create peace and harmony in the environment. Toward this end, he will be forever thrust into circumstances where he feels compelled to declare his convictions and take appropriate action. The person should focus on his physical body, be more daring, and allow the fiery element of his personality to come through more often. In ancient Hindu astrology, the North Node (Rahu) in the first house and the South Node (Ketu) in the seventh indicates a beautiful and powerful appearance, serious ups and downs in married life, and a strange, eccentric, or highly spiritual spouse. John Lennon is a

good example. Sign positions of the nodes are of much less significance.

## **Special Report of Debilitated/Exalted/Retrograde planets**

### **Debilitated**

None

### **Exalted Rahu**

Rahu is an inauspicious planet and generates illusions. Its influence generally makes a person materialistic, often craving for that what does not belong to him. In addition to this people under its influence generally become overconfident and underestimate situations or people around them. In short, Rahu initially immerses a person in the affluence and then leads him to frustration. However, on the positive side it makes a person very persistent in achieving his goals. It is pertinent to mention that due to its influence at times you are so elusive that no one can decisively understand the working of your mind. In addition to this, professional concerns may send you travelling far and wide bringing into contact different kind of people.

### **Exalted Ketu**

Ketu is a natural malefic planet in your birth chart. Normally it slow downs the development of the traits of the houses or planets that are under its close influence and results in unhappiness. In addition to this it causes miseries also. However, it is in exalted state in your chart. As a result of which, Ketu might provide you with some very original ideas that you cannot consolidate or compile. In addition to this it may arouse ethical considerations in one's human relationships; such a person may not be rich, but he is a well meaning and helpful friend when his affection is won.

### **Retrograde**

None

## **Planetary Yogas in your chart:**

Planetary Yogas are complex planetary combinations that consider many factors including sign, house and aspect. Yoga itself means combination. Many yogas require and exchange of signs between the two planets but not necessarily an aspect between them nor by conjunction in a particular sign.

Theoretically in any chart, there are hundreds of possible yogas. However not all of them are effective enough. Which Yoga will be effective and when will they be effective is again a matter of complex judgment by the astrologer.

We are giving below a list of important and effective Yogas in your chart, and their interpretation as per ancient astrological classics. Here again there will be contradiction between the positive and negative effects of Yogas in your life. This is followed by the astrologers comment which Yogas will be really effective and when they are likely to be effective in your life. There are many possible yogas in your chart. They could be in hundreds, but not all of them will be effective or significant. We are only mentioning the effective Yogas in your chart based on the natal status of the participating planets and also their participation in the Dasha system of your at the appropriate time in your life, when such yogas can have meaningful effects in your life.

### **Important Yogas from in your chart.**

### Raja Yoga:

A mutual relationship exists between the lord of the 4<sup>th</sup> house on the one side and the lord of the 5<sup>th</sup> or 9<sup>th</sup> on the other.

This elevates the status of the individual in terms of success, recognition and status.

### Raja Yoga

A mutual relationship exists between the lord of the 5<sup>th</sup> house on the one hand and the 7<sup>th</sup> or the 10<sup>th</sup> on the other.

This elevates the status of the individual in terms of success, recognition and status.

### Raja Yoga

Lords of the 4<sup>th</sup> or the 10<sup>th</sup> are in conjunction with the lords of the 5<sup>th</sup> and the 9<sup>th</sup>.

The person will share a kingdom. This leads to kingship or royal status.

### Vimparita Sarala Raja Yoga

The 8<sup>th</sup> lord is in the 6<sup>th</sup>, 8<sup>th</sup> or 12<sup>th</sup> house.

This confers learning, longevity and prosperity. The person will be successful in all ventures, conquer of foes and a great celebrity.

Astrologer's judgment on which Yogas will be effective and when.

In our opinion, the most effective Raj yoga in your chart has been formed by Venus and Moon. This is likely to manifest during Venus/Moon period in the future between 6<sup>th</sup> February, 2013 to 8<sup>th</sup> October, 2014.

The other important and effective Yoga is formed by the exchange of signs between Saturn and Moon in your chart. This could have manifested in your life during Saturn/Moon period between 10<sup>th</sup> September, 1976 to 11<sup>th</sup> April, 1978 in terms of great professional success in life.

### Some Karmic Indicators in your chart based on Ashtakbarga Calculations of your natal chart.

These indicators should be considered as indicative only and not definitive. Definitive conclusions can only be given when all factors are included along with the Dasha Vichar in the chart:

### Best Part of Life:

According to the analysis of your chart the **First Phase** of your life will be **exceptionally good** in your life During this phase you will enjoy your life in all aspect be it fame, prosperity, success or prestige. You will lead a good and comfortable life.

According to the analysis of your chart the **Middle Phase** of your life will be **challenging**. During this phase of your life you may have to face numerous problems and have to struggle to move ahead in life. This challenging period will be tough but as the saying goes "every cloud has a silver lining" good times will soon follow.

According to the analysis of your chart the **Final Phase** of your life will be **okay and will have normal ups and downs**. During this phase you will enjoy your life but may also face some obstacles. These problems may be related to different aspects of your life.

### **Best Direction in your Life**

According to the analysis of your chart the direction **East, North** would be **most beneficial** for you to pursue your vocation or take any opportunity that knocks the door of your destiny.

According to the analysis of your chart the direction **West** would be **most challenging** for you. So, it is best to avoid this direction. Your effort in this direction may not provide you fruitful result.

### **Effort to Reward ratio in your chart:**

There are 3 kinds of people in this world. The first group are very lucky that whatever efforts they make they actually get greater rewards and recognition for their efforts compared to other people. This means they are lucky to reap more than what they sow. There are second group of people, they reap in exact proportion to what they sow. Finally the third group is somewhat unlucky, in spite of best efforts, the reward and recognition they get are not commensurate with their efforts. They reap less than what they sow. We call this reward to effort ratio in the chart and is computed by dividing the 11th house ashtakbarga strength with the ashtakbarga strength of 10th house.

Your 10th House Score is: 31

Your 11th House Score is: 36

Reward to Effort ratio in your chart is **1.161**

Therefore, the Karmic condition in your chart is such that you will always get higher reward than what you deserve. But this does not mean that you will receive reward without any efforts. Hence, you should be consistent in your efforts and it will definitely help you to gain great success in life.

### **Employment or business is suitable in your chart:**

According to the analysis of your chart not suitable for business. Will be successful in a profession or career.

### **Astrologer's final comment on different important aspects in your life:**

#### **Life in general:**

##### **Physical Characteristics:**

Your Ascendant is Taurus. The degree of Ascendant is in the first decanate. You should have a middle stature and not too short. You will be inclined to plumpness. You should have a square face and square build of body. You should have a short strong neck. Your forehead, nose, lips, cheeks and mouth should be full and well formed. You should have heavy jaw, dark eyes and hair. Hair could be curling and often stoops. You should have round and prominent eyes. Your hands should be plump, short and broad.

##### **Mental Characteristics:**

You should be stable, constant, persevering, determined, conservative, obstinate. You can be agreeable, affectionate, sociable and loving. However you can also be very unreasonable, prejudiced, and wrong headed, and when angry will stop at nothing. You will be proud and ambitious of power. You will be good and plodding worker but sometimes you can be very slow, indolent, and sensuous.

The second decanate of Taurus rising awakens the internal nature of the sign, which will give you more intuition, discrimination and practical business ability, but at the same time there is a tendency to be more critical as well as intuitive, and although clever, you may have strong temptations to become selfish and over-acquisitive. Your fate will be influenced by external and concrete matter of fact experiences. The finer vibrations of this decanate denote keen appreciation, sterling qualities, musical and artistic talent and excellent business and practical ability. However the coarser tendency can make you too exacting and a carping critic.

## **Different aspects of your life:**

### **Profession and core competence:**

The 10<sup>th</sup> house in our chart is the house of profession. Lord of 10<sup>th</sup> house in your natal chart is Saturn. Saturn in the Navamsa chart or in the 9<sup>th</sup> harmonic chart is in Sagittarius which is ruled by Jupiter. In the 10<sup>th</sup> harmonic chart or Dasamsa chart, the 10<sup>th</sup> house is Scorpio which is ruled by Mars. Moon is placed in your 10<sup>th</sup> house also. The planets which qualify to decide the profession in your life are Saturn, Jupiter, Moon, and Mars. The strongest among them are Moon and Mars. Moon is the lord of 3<sup>rd</sup> house, located in 10<sup>th</sup> house. Mars is the lord of 7<sup>th</sup> house and 12<sup>th</sup> house, located in 2<sup>nd</sup> house.

Based on all these factors, our astrological conclusion about your profession and career could be as follows:

You are most likely to have a profession either connected to fine arts and literature, and performing arts, or you are likely to be connected to a healing profession of nursing and medical practice. In any of these professions, you could be actually involved in teaching. Or you could have been a pure home maker and have devoted your life to the nurturing of your spouse, child, siblings, parents and family.

In case you had an active career in your life, then you are likely to reach the peak of your profession between 1998 to 2002.

### **Money-property-income:**

The 2<sup>nd</sup> and 11<sup>th</sup> house in the chart signifies income as well as accumulated wealth and assets. The chart clearly indicates that you will have a high level of individual income or family income, but you will be unable to accumulate and save wealth commensurate with your level of income. Your expenditure will also be very high. High and low are purely relative terms and the expression will mean consistent with your social and economic status of yourself and your family. Your chart also clearly indicates that your wealth will be largely created by your own efforts. There is a Vipareet Raj Yoga in your chart, which signifies that you may acquire wealth and assets through inheritance but you may not be able to keep some of these assets. They can be either sold off or may be tied or lost through litigation.

### **Romance and Married life:**

In your natal chart, the 5<sup>th</sup> house lord Mercury is conjoined with 7<sup>th</sup> house lord which is a strong signature of love marriage instead of an arranged marriage. However your marital life will be disturbed and will be full of ups and downs because of the Rahu/Ketu axis between your 1<sup>st</sup> and 7<sup>th</sup> house in your natal chart with the ultimate trauma and guilt that you might

have felt after your husband's suicide due to depression. However you should not feel guilty because of this in case you do, because suicide of your husband is not indicated in your chart, it can only get reflected in your husband's chart. As per your chart, the earliest indication of marriage or a love affair will be during Jupiter/Rahu period between 15<sup>th</sup> May 1963 to 8<sup>th</sup> October 1965 and the earliest indication of marriage will be between 21<sup>st</sup> June 1971 to 30<sup>th</sup> July 1972 during Saturn/Ketu period or during Saturn/Venus period between 30<sup>th</sup> July 1972 to 29<sup>th</sup> September 1975. However there could have been another relationship in your life between 8<sup>th</sup> April 1993 to 5<sup>th</sup> April 1994 during Mercury/Mars period or during the following Mercury/Rahu period. This is a possibility only and could have been an one sided affair from your partner's side and not necessarily from your side also with equal intensity.

### **Parents and Siblings:**

Being the only female among 7 brothers should make your position very unique in your parent's house. Astrological signatures in your chart indicate that you should either have 1 or maximum 2 younger siblings or more likely no younger siblings. Relationship with your mother should be close, but it also indicates that after your birth or at a very early age, your mother's health could have deteriorated. Your mother could have passed away earlier at an early age. As a result you could have felt lonely in your childhood among all your siblings who were much elder than you. Your father should lead a long life. Emotionally you might not have been very close to your father than your relationship with your mother or with the memory of hers in your mind. Your elder siblings could be supportive to you financially, but your emotional relationship will not be that strong with them compared to your relationship with younger siblings if you had any.

### **Progeny:**

5<sup>th</sup> house is the house of progeny. 5<sup>th</sup> house in your chart is Virgo which is ruled by Mercury. Mercury is a barren planet as a result you do not have more than one child. Mercury is in your 2<sup>nd</sup> house in it's own sign, which is the house of family. It has been always you and your son have been the family. Your son will be always emotionally close to you specially after the death of your husband. Since 5<sup>th</sup> lord is in 2<sup>nd</sup> house, the house of wealth, it also indicates, you will receive financial support from your child.

### **Health and Longevity:**

Your First house is very strong and powerful (Ref. House Table).

Lord of 1<sup>st</sup> house and 6<sup>th</sup> house, Venus is also quite strong and powerful. Exalted Rahu is located in your ascendant. This indicates that your general health will be very good. Jupiter is located in your 6<sup>th</sup> house, the house of disease and obstacles indicate that your immunity against disease will be also very strong.

However at some stage in life we all will suffer from some disease or the other. From your chart the vulnerable areas of your body which can be prone to disease will be your throat and neck area. Lower abdomen area and reproductive zone. You are theoretically prone to specific diseases around specific organs in these parts of your body. However not all such disease will be applicable. You will be most vulnerable to neck and throat area like spondylitis, chronic throat infections. There can be imbalance in Kaph humor as most of the malefic planets in your chart are based on the water signs in your chart. Saturn and Sun in Cancer. Ketu in Scorpio. There can be wind complaints because lord of 7<sup>th</sup> Mars is in air sign as well as lord of 8<sup>th</sup> Jupiter is in air sign. Lord of 6<sup>th</sup> Venus is located in water sign.

But overall as I have stated you are unlikely to suffer any major disease throughout your life except for some serious ailment during the last stage in your life.

This will lead to longevity calculation of your chart. The most authentic method of longevity calculation in any chart will be by sage Jaimini.

### Jaimini's method:

A) Lord of Ascendant, Venus is in Cancer which is a movable sign.  
Lord of 8<sup>th</sup> house Jupiter is in Libra which is a movable sign.  
The method signifies " Long Life Span"

B) Ascendant Sign is Taurus which is fixed sign  
Moon Sign is Aquarius which is fixed sign  
This method signifies "Short Life Span"

C) Ascendant Sign is Taurus which is fixed sign  
Hora Lagna is Aquarius which is fixed sign  
This method signifies " Short Life Span"

Since two tests signify "Short Life Span" and one test signifies "Long Life Span"

Our conclusion is you will have " Medium Life Span" In today's context medium life span can be anything between 50 years to 70 years. The exact period of death will be decided by the Marak Dasha to be experienced within the age limits given by Medium Life Span. Marak planets for Taurus Ascendant people will be Jupiter, Venus, Moon and Mars. Venus should be ruled out because Venus is also lord of Ascendant. However combination of Venus and Jupiter in the Dasha System could be the strongest Marak period in her life. As per Dasha Calculation this will be Venus/Jupiter period between 8<sup>th</sup> December 2018 to 8<sup>th</sup> August 2021. She will be 71 to 73 years of age during this period, and she should prepare herself mentally and physically for her final journey towards salvation.

### An overview of Life Status at a Glance:

<b>ASPECT</b>	<b>STATUS</b>
<b>HEALTH</b>	<b>Excellent</b>
<b>WEALTH</b>	<b>Above Average</b>
<b>WORK</b>	<b>Excellent</b>
<b>PARTNER AND MARITAL LIFE</b>	<b>Most Challenging</b>
<b>PROGENY HAPPINESS</b>	<b>Good</b>
<b>MENTAL PEACE</b>	<b>Ok</b>

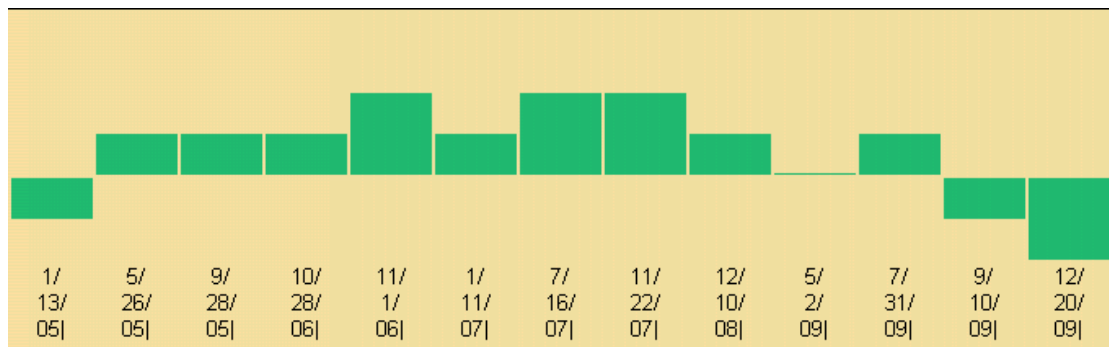
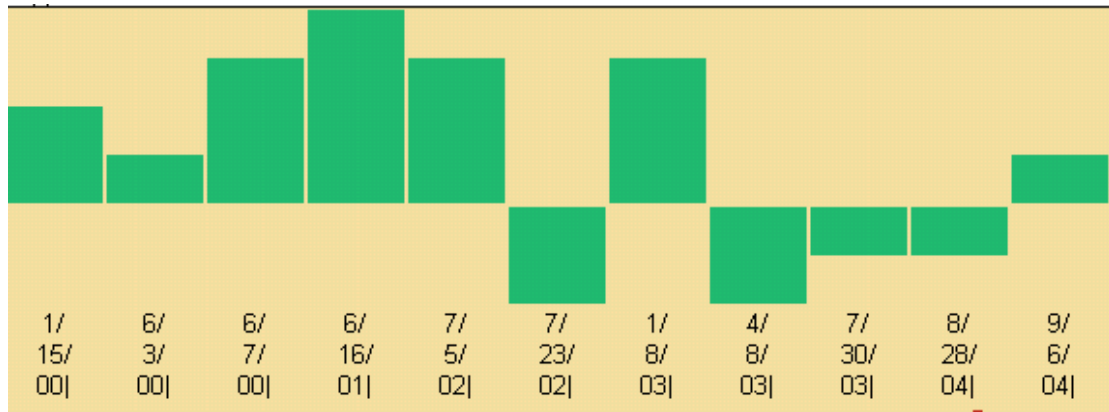
### When the natal promises of each planet will manifest in her life?

#### The Transit signatures

The turning points of life during last ten years as per the transit of Saturn and Jupiter in your chart.

#### The turning point graph

#### Happiness Index



**Dates represent starting period of trend  
(Date Format is month/day/year)**

### **The Saturn transit-**

Saturn completes a round of zodiac in 30 years. So a particular important transit of Saturn in our life will come after every 30 years.

There are two important transits of Saturn in our life. One is called the Saturn return, when Saturn comes back after every 30 years in our life to conjoin with the natal position of Saturn in our chart. This transit lasts for 2 ½ years.

The second and most important transit of Saturn is known as the 7 ½ year cycle of Saturn or Sare sati. This transit consists of 3 phases of 2-½ year each. This transit commences when Saturn enters one sign previous to the sign where Moon located in our natal chart. The 7-½ year cycle ends when Saturn exit the sign, which is one sign after the natal sign of Moon in our chart.

In some charts, depending upon the location of Saturn and Moon in the natal chart, Saturn return can be part of the 7-½ year cycles also.

Both these transits mark the most important transformation in our life both at the level of physical or mundane as well as at the emotional level. These transits can be extremely stressful, challenging, and even rewarding experience or a mixture of all that depending on the natal status of Saturn and Moon in our chart. If the transit coincides with Saturn main period or sub periods, the impact will be even more dramatic. The 7-½ year cycle of Saturn is usually an intense learning experience in our life.

### The 7½ year cycle of Saturn in your life -

You experienced the first 7-½ year cycle of Saturn in your life between February 1961 and 17<sup>th</sup> June 1968. This period could have caused some anxieties due to health or other factors.

The next 7-½ year cycle of Saturn in your life you are experiencing from 20<sup>th</sup> March 1990 and will continue till 17<sup>th</sup> April 1998. You should be cautious during this period. This does not mean that the entire 7-1/2 years will be bad, but it could cause pinpricks in one's profession or anxieties due to health or other factors.

You are presently going through a very challenging transit of Saturn between 10<sup>th</sup> September 2009 till 16<sup>th</sup> November 2011. Saturn is now transiting to Virgo which is the 8<sup>th</sup> house from Moon in your natal chart. This also called Dhaya of Saturn. Health can become a major concern in your life during this period. Unreserved the pass may confront to, and Saturn may force of the other.

### Next ten years of your life as per Karma index calculation of your chart.

Karma index in a unique prediction to from Cyber Astro. In this technique, net effect of each planets and transiting are calculated for each day. How the combined transit of all planets will affect each house in your chart are calculated and accumulated for the complete period. We are given below the karma index table for next ten years of your life. Which will so you the year wise accumulation a positive or negative values for each of your twelve houses in your chart and also the net karma index of each value.

### Karma Index

From Date	To Date	Soul	Wealth	Efforts	Happiness	Creativity	Disease	Spouse	Windfall	Destiny	Vocation	Desire	Detachment	Karma
05-Jan-2010	04-Jan-2011	460	679	-375	531	-400	-183	-79	-160	-765	75	507	-1225	131
05-Jan-2011	04-Jan-2012	210	1967	-613	272	202	-70	514	673	-632	430	1443	-841	474
05-Jan-2012	04-Jan-2013	724	212	209	790	-241	336	-413	-594	82	334	107	-641	549
05-Jan-2013	04-Jan-2014	194	276	150	263	144	-47	-274	-219	170	489	-71	-23	407
05-Jan-2014	04-Jan-2015	224	-374	-138	313	-357	-91	-670	-1030	-223	410	-216	-447	-44
05-Jan-2015	04-Jan-2016	312	920	-523	368	-309	-458	-39	96	-1023	-62	408	-1335	59
05-Jan-2016	04-Jan-2017	231	300	-478	291	-466	-516	-264	-310	-960	-33	85	-1191	-175
05-Jan-2017	04-Jan-2018	511	205	62	571	-281	-147	-321	-273	-327	60	-141	-837	290
05-Jan-2018	04-Jan-2019	465	661	-551	536	-629	-517	-90	-55	-1287	-276	333	-1752	-93
05-Jan-2019	04-Jan-2020	212	743	-341	273	-98	-240	-92	-61	-532	255	393	-744	175

Best >= 1000    Mixed < 1000 And >= 300    Average < 300 And >= 50    Worst < 50

### Comments and explanation

For your health (Physical and mental) you should examine soul index and disease index in the above table for each year.

For finance and wealth you should examine wealth index and desire index in the above table for each year.

For your courage, confident and initiative and relationship with your siblings you should examine the efforts index.

For domestic peace harmony material comforts and physical and emotional security in your life and your relationship your mother and mother land as applicable. You should examine happens index values for each year.

For progeny happiness and relationship with children you should examine creativity index value for each year.

For specific physical disease and ailment and your capacity to over come them, you should examine disease index for each year. Besides health you should also indicate the difficulties and challenges and your capacity to over come in your day to day life in profession or career.

For all relationship / partnership in personal life or in business life you should examine spouse index values for each year.

For unexpected karmic rewards and punishments with in health / financial matters / reputation / legal matters you should examine windfall index for each year.

For overall luck factor, and for success in pursuit of Dharma and your Vocation you should examine destiny index for each year. A positive destiny index will act a protector in every aspect of your life.

For specific success in profession and career you should examine vocation index and creativity index values for each year.

For expenditure, losses, long consignment due to illness or others will be indicated by negative detachment index values for each year. Positive detorment index value will indicate success in a foreign country also and will indicate fulfilment of sexual desires in life.

The overall karma index values will give you a general overview of each year in your life. High positive values will indicate the good year for you and life and low karma index values will indicate that the challenging year in your life.

### **DASA VICHAR: ANALYSIS OF VIMOSOTTARI PERIODS.**

In this section, we analyse the different planetary periods and what effect they will have on your life.

According to Vedic astrology, theoretical life span of an individual is taken to be 120 years. This entire life span is divided into different main periods of planets and within this main period, there are sub-periods of all the planets and then each sub-period can be divided into sub-sub-periods of planets. This follows a predetermined sequence, the starting point of which is determined by the longitude of Moon at the time of birth.

This is unique to Vedic astrology and is called Dasa Vichar or period analysis. The effects of the planets become most operative during the Main Dasa or the sub-Dasa: Transit effects

and the relation between the Main planet and the sub-planet also determine whether the good effects will be more predominant or the bad ones.

**Main period of Rahu: 5<sup>th</sup> August 1947 to 8<sup>th</sup> October 1949**

You were born almost at the end of Rahu period during Rahu/Moon sub-period. Your birth must have been a period of great joy in the family because a daughter is born after so many male children. You had basically experienced about 2 years of Rahu period in your life out of 18 years main period of Rahu.

**Main period of Jupiter: 8<sup>th</sup> October 1949 till 8<sup>th</sup> October 1965.**

You might have suffered a bout of serious illness during Jupiter/Saturn period between 26<sup>th</sup> November 1951 to 8<sup>th</sup> June 1954. The earliest period when you could express your artistic talents to the world at large will be during Jupiter/Venus period between 20<sup>th</sup> August 1957 to 20<sup>th</sup> April 1960. Your formal schooling or education should start during Jupiter/Mercury period between 8<sup>th</sup> June. 1954 to 13<sup>th</sup> September 1956. As mentioned earlier, there could have been a love affair during Jupiter/Rahu period between 15<sup>th</sup> May 1963 to 8<sup>th</sup> October 1965. This would also mark the end of 16 years main period of Jupiter in your life

. Jupiter is in 4<sup>th</sup> house from Sun in your natal chart. The macro direction of main period of Jupiter in your life will be to complete the basic education including nurturing of your special artistic talents. The First Sade Satti in your life would also start during Jupiter period from 2<sup>nd</sup> February 1961. It is possible that one of your parent might have passed away during the last sub-period of Rahu in the main period of Jupiter.

**Main Period Of Saturn: 8<sup>th</sup> October 1965 to 7<sup>th</sup> October 1984.**

Saturn is located in the first house from Sun in the natal chart. The macro direction of 19 years main period of Saturn in your life will be to give concrete shape to Pursuit of “dharma” or Vocation. Apart from profession to earn your livelihood, even getting married and to become a householder will be all part of your Vocation.

As per your chart, you are likely to start your independent vocation during Saturn/Mercury period between 11<sup>th</sup> October 1968 to 21<sup>st</sup> June 1971. You are likely to get married any time between December 1970 to December 1971 most probably during Saturn/Ketu period between 21<sup>st</sup> June 1971 and December 1971.

Saturn/Ketu period will continue till 30<sup>th</sup> July 1972. Your child is also likely to born during Saturn/Ketu period itself.

Saturn/Rahu period between 21<sup>st</sup> May 1979 to 27<sup>th</sup> March 1982 should bring public recognition specially if you have been pursuing performing arts.

**Mercury Period: 7<sup>th</sup> October 1984 to 8<sup>th</sup> October 2001**

Mercury is in 12<sup>th</sup> house from Sun in your natal chart. Mercury is 2<sup>nd</sup> lord and 5<sup>th</sup> lord, which is placed in own house in 2<sup>nd</sup> house. As indicated above at the place of planetary explanation that planet Mercury would play a favorable and supportive role in your life. So, during the whole main period of Mercury you could have got good enjoyment of family life as well as financial prosperity in the family. This main period might have also enhanced your social contacts as well as social status in the society where you got your own identity apart from the identity related to family. The whole main period of Mercury was also very favorable and supportive for your children. So, your son could have got good academic progress during this main period.

However, the 2<sup>nd</sup> house lord Mercury was the Marak planet for your husband as it was the lord of 8<sup>th</sup> house for the house of marriage. As planet Saturn gives absence of happiness in

our life so, during the sub period of Saturn at the end of this main period you lost your husband. Therefore, despite of giving a happy and prosperous life during its main period, planet Mercury has given you lonely life at the end of its main period. Despite of above fact you got a good financial back ground to spend a quality life after this main period.

**Ketu main period: 8<sup>th</sup> October 2001 to 7<sup>th</sup> October 2008.**

The main period of Ketu can be said a mature phase of your life where after facing of lots of ups and down in your life you became a mature person by this time. As planet Ketu is placed in your house of marriage and it is a planet of detachment so, during this period there was absence of romantic aspect of life. However, the main period of Ketu might have strengthened the spiritual aspect of your life. Planet Ketu also give loss of some close people so, during this main period you might have lost some of elderly persons of your family. In other words you could have lost your in laws OR your parents either during the main period of Ketu. So, your loneliness might have increased further during the main period of Ketu but the spiritual side might have became strong during this period.

**Venus main period: 7<sup>th</sup> October 2008 to 7<sup>th</sup> October 2028**

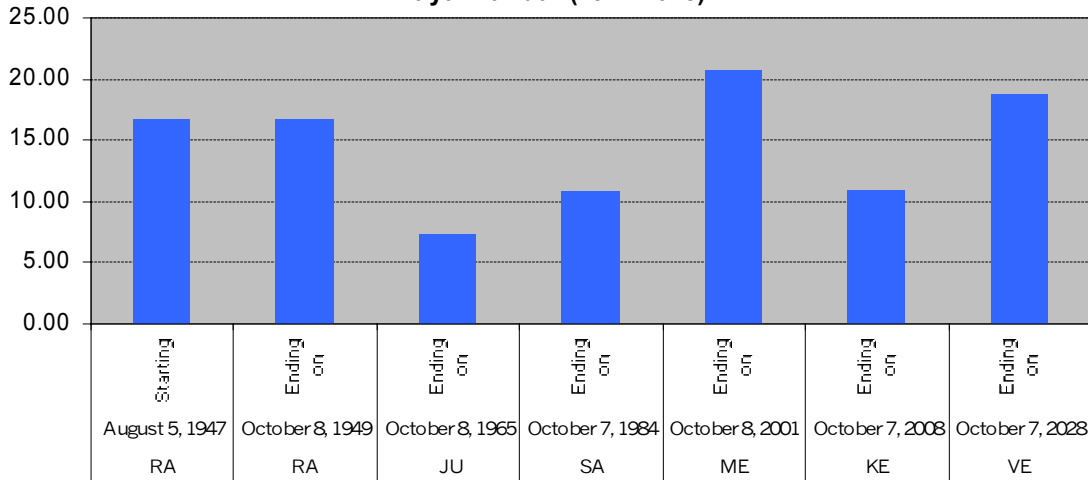
The main period of Venus can be said the last phase and last main period of your life. Though, the lord of ascendant Venus indicates good enjoyment of comforts of life during its main period. However, the 6<sup>th</sup> house lord Venus could also create some health problem due to the health ailments mentioned above with the point Health and longevity. So, you have to take every care to balance your routine life as well as diet etc. If you see the indication of 10 year future Karma Index, which is the combined transitory indication of all planets then you will find out that the value of Disease Index are further down from January 2013 onwards. Therefore, after January 2013 the bad health ailments could weaken your physical capacity.

Currently the sub period of Venus in the main period of Venus till 7<sup>th</sup> February 2012 could give you good enjoyment of comforts of life. However, the sub period of Sun from 7<sup>th</sup> February 2012 to 6<sup>th</sup> February 2013 could again give you loss of any elder person, which could be your sibling or close friend etc. After this the sub period of Moon from 6<sup>th</sup> February 2013 to 8<sup>th</sup> October 2014 could disturb your mental peace. The feeling of loneliness could be the major reason of mental peace disturbance so, you should try to engage yourself in social activities. However, the sub period of Mars from 8<sup>th</sup> October 2014 to 8<sup>th</sup> December 2015 could give you the situation of hospitalization. Particularly, the problem related to bone like spondylitis etc could be the main reason of severe pain or health problem. However, after that the sub period of Rahu from 8<sup>th</sup> December 2015 to 8<sup>th</sup> December 2018 indicates some important change in your life or in life style. So, during this sub period the chances are very high that your son could join to you or your care would be taken by him. However, your life style might became very simple and mentally you would prepare yourself for final departure from this world. The sub period of Jupiter of the main period of Venus from 8<sup>th</sup> December 2018 to 8<sup>th</sup> August 2021 could be the last phase and last sub period of your life. During this period you might be trapped with so many health problem, which could take you for final journey at stage of your life. Specially the period from 17<sup>th</sup> January 2021 to 14<sup>th</sup> March 2021 could be fatal for you.

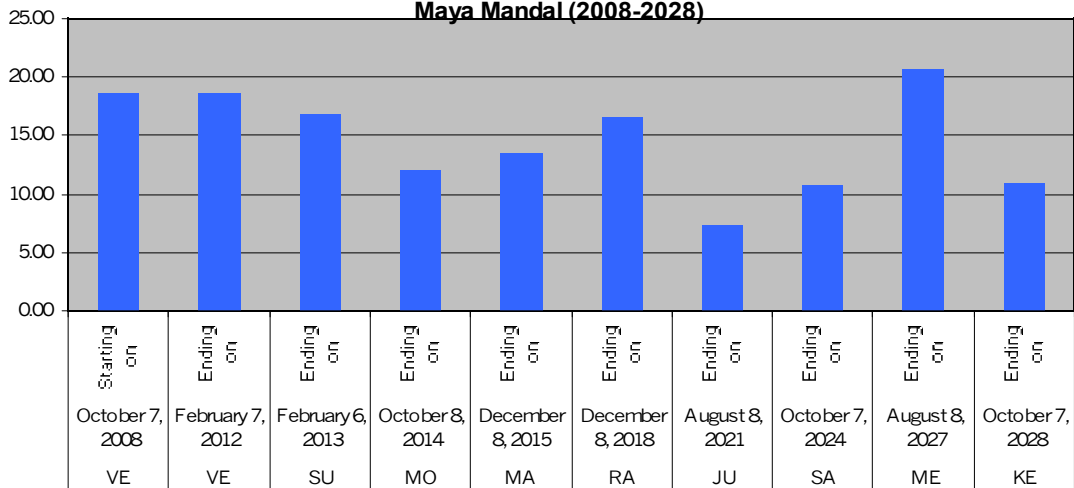
May God give you salvation.

**BENEFIC LIFE INDEX AS PER DASHA VICHAR OF WHOLE LIFE :**

**Benefic Index Across Different Planetary Main Periods of  
Maya Mandal (1947-2028)**



**Benefic Index during the Comming Planetary sub periods under the Main  
Period of Venus of  
Maya Mandal (2008-2028)**



**[Search for Our Life Script - The Answer to Peace, Prosperity and Happiness in this Life](#)**

“Who am I?”

Our whole life is but a quest to find the answer to this question. We at Cyber Astro do not claim that we know the answer. All philosophers say, “know thyself”, but it is easier said than done. Only God knows the answer because He is the final repository of all “knowledge”. However, astrologically, by knowing the nature of planets, their strengths and weaknesses in the horoscope, one can gain some insight into one’s life. Let us attempt to do that together. According to Vedic astrology, the four legitimate aims and goals of human life are *Dharma, Artha, Kama and Moksha*.

Dharma means “principle of law and order” and refers to the fulfilment of our need for honour or recognition in life. We call it “Vocation”, as this is how our culture interprets this

need. Each of us needs to be acknowledged for what we can contribute to society without compromising the individual identity.

Artha means “achievement” of goals. More specially it relates to the acquisition of valuable objects and so could be referred to as “wealth”. Each of us should possess necessary wealth to function happily in life.

Kama literally means “desire” and refers to our need for emotional and sensory happiness in life. As such we call it “enjoyment”. All that we do in life should be enjoyable and should not cause pain to ourselves or to others.

Moksha means “liberation or freedom” and relates to our need for spiritual growth, including transcendence of three lower values. We all must seek to go beyond who we are until we become one with all.

The interesting thing is that each one of us works according to the divine “Life Script”, which determines to what extent and when we will pursue each of these aims in our lives. Of course, we do pursue all these aims simultaneously all through our lives. But, each one of us has a specific life script encoded in the astral configuration of the natal chart and we can get an indication of that by analysing each person’s Vedic Astrology chart. The important thing is to discover the life script within us. The planets do act as referees and critics in this cosmic drama. They announce prizes, penalties and sometimes also put a brake on our impulses. Through astrology what we shall do is to get a better understanding of the parameters of our individual lives. We should not take it as finality because the stars show us the tendencies based on our past Karma. By doing good deeds in this life we can significantly alter the effects of this. Present karma can enhance or minimize the influence of past karma.

#### **Ordained life script score table**

<b>Pursuits</b>	<b>Scores</b>
<b>Pursuits for 'Dharma' (Vocation)</b>	<b>=79 (Sum of 1st+5th+9th house AB scores)</b>
<b>Pursuits for 'Artha' (wealth)</b>	<b>=80 (Sum of 2nd+6th+10th house AB scores)</b>
<b>Pursuits for 'Kama' (sensual pleasure)</b>	<b>=89 (Sum of 3rd +7th+11th houses AB scores)</b>
<b>Pursuits for 'Moksha' (salvation)</b>	<b>=89 (Sum of 4th +8th+12th houses AB scores)</b>
<b>Total</b>	<b>337</b>

Normal pursuit of any goal will give you a score of 84. Anything less than 84 or more than 84 will indicate that you have a bias in the pursuit of that particular goal, because the sum total of these scores for any chart will always be 337.

The cycle of karma in our life will force us to go through all the experiences and goals in life as revealed by our ordained life script score.

Our life is never linear or black and white, it always has shades of grey contradictions and they will rear their head, no matter how hard we try to purge them. In this final section, we shall examine those contradictions as revealed by your chart.

#### **"HOUSES FROM HOLISTIC POINT OF VIEW"**

The houses, which are the domains of planetary action, can be categorized to signify our pursuit of the four aims of life. Three of the houses belong to one pursuit among the 4 pursuits of life.

### The 4 goals of life and associated House Table

<b>Pursuit of Dharma houses (D)</b>	<b>1st</b>	<b>5th</b>	<b>9th</b>
<b>Pursuit of Artha houses (A)</b>	<b>2nd</b>	<b>6th</b>	<b>10th</b>
<b>Pursuit of Kama houses (K)</b>	<b>3rd</b>	<b>7th</b>	<b>11th</b>
<b>Pursuit of Moksha houses (M)</b>	<b>4th</b>	<b>8th</b>	<b>12th</b>

Among the three houses in each category, each of them is supposed to represent a particular process.

In nature, any phenomena can be viewed as going through 3 distinct stages or process. The first stage is a "Seed stage". The second stage is a "nurturing stage" when the seed transforms into a sapling by proper nurturing or trigger. The third stage is the final result or full manifestation of the seed into fruit and flower.

From the flower and fruit, a new seed is formed and the cycle goes on. This constitutes our life cycle and the external cycle of Karma till we reach our final salvation after many incarnations.

#### The dialectics of life as symbolized in our chart –

There are 12 houses in our chart. There can be 6 pairs, where in each pair, we have clubbed 2 houses opposing each other in our chart. So these 6 pairs are as follow -

<b>1st pair</b>	<b>1st house and 7th house</b>
<b>2nd pair</b>	<b>2nd house and 8th house</b>
<b>3rd pair</b>	<b>3rd house and 9th house</b>
<b>4th pair</b>	<b>4th house and 10th house</b>
<b>5th pair</b>	<b>5th house and 11th house</b>
<b>6th pair</b>	<b>6th house and 12th house.</b>

In the dialectic view of life, in each pair, one house is the thesis and the other house is its antithesis.

There is a constant struggle between the thesis and antithesis and a synthesis is taking place, which is again generating its antithesis, and a new synthesis takes place. This is the saga of our life and this is truly how the cycles of karma get manifested in our life.

In our life, as in nature any Karma that we perform goes through 3 distinct processes. The 1st process is the seed or the reasons, the 2nd process is the trigger or transformation when seed transforms and takes a definite meaning or form, the 3rd process is the manifestation when the form matures and delivers the fruits and flowers. We can call this result state.

In our chart, each house signifies a particular process signifying the 4 goals in life. We have tabulated these 4 goals in life and have leveled each house in the chart and the process each house signifies in the following table –

#### House and Process associated with each house

<b>Pursuits</b>	<b>Seed stage</b>	<b>Trigger stage</b>	<b>Result stage</b>
<b>Pursuits for 'Dharma'</b>	<b>1st house</b>	<b>5th house</b>	

(Vocation)			
Pursuits for 'Artha' (wealth)	10th house	10th house	2nd house
Pursuits for 'Kama' (sensual pleasure)	3rd house	7th house	11th house
Pursuits for 'Moksha' (salvation)	12th house	4th house	8th house

Now we can view the dielectics of life with respect to the AB score of each house in our chart as given in the house table.

### House and Process associated with each house

Pair Number	Houses involved	Synthesis	AB scores (in your chart)
1st pair	1 <sup>st</sup>	Vocation trigger	35
	7 <sup>th</sup>	Desire trigger	25
2nd pair	2 <sup>nd</sup>	Wealth result	20
	8 <sup>th</sup>	Salvation result	25
3rd pair	3 <sup>rd</sup>	Desire seed	28
	9 <sup>th</sup>	Vocation seed	20
4th pair	4 <sup>th</sup>	Salvation trigger	30
	10 <sup>th</sup>	Wealth trigger	32
5th pair	5 <sup>th</sup>	Vocation result	24
	11 <sup>th</sup>	Desire result	36
6th pair	6 <sup>th</sup>	Wealth seed	28
	12 <sup>th</sup>	Salvation seed	34

If AB score is 28 or more, then that function/process will manifest smoothly and without any challenges. If AB score is less than 28 then that function will pose difficulties and challenges. Lower the score will be the difficulties and challenges.

We can rearrange the numbers in a slightly different way and see how you will progress in each of these 4 goals in life.

### House and Process associated with each house

Pursuits	Seed	Trigger/span	Results
Pursuits for 'Dharma' (Vocation)	20	35	24
Pursuits for 'Artha' (wealth)	28	32	20
Pursuits for 'Kama' (sensual pleasure)	28	25	36
Pursuits for 'Moksha' (salvation)	34	30	25

Comments -

If AB scores is 28 or more, then the process signified by the specific house will proceed smoothly without much difficulties or challenges, because the planets and their interaction with the house will be supportive and harmonious. The greater the value, the harmonious interaction will be more supportive to you. These are your opportunity areas in life and you must utilize them to the best of your abilities.

If AB score is less than 28, then the process signified by the specific house will present many challenges, difficulties and obstacles in life, because the specific house is being

exposed to too much negative energy from the planets influencing the house. The lesser the score is from 28, the greater the difficulties and challenges.

These are the areas, which you have to confront in your life, and you have to realize the nature of these negative energies.

You have to make conscious efforts to improve and to fight these negative energies so that they do not cloud and overwhelm your thoughts, your attitude, your action and your response pattern.

First of all you have to realize and accept that such a problem exists, only then you can begin to fight, neutralize and reduce the pain and suffering that these struggles can cause in life.

Astrology is not for people who would simply want to know about the happy things and close their eyes to the negative aspects in the chart, and accept it blindly as the fate or destiny and do nothing about it. You have to make conscious efforts to bring about a fundamental change in your personality, the way you think, the way you respond to events and people or the way you act to outwit the stars.

Yes you can change your destiny and you can outwit the stars also. Fortunately, the ancient Vedic Sages have also advised short cut and astrological remedies, which will help you to conduct this struggle in less stressful manner, but your own conscious efforts will be the supreme deciding factor in your battle to outwit the stars.

We shall now explain the nature of this struggle of six pairs in little more details, which will give you a better insight and will guide you to identify the areas where you need to improve through your own conscious efforts. You should go through this explanation carefully and it may demand multiple reading to grasp its full significance in your life.

### **The Struggle of First pair -**

This is the battle between Vocation trigger and Desire trigger.

The vocation trigger, which basically decides, how clear we are about our own core competence and skills and how strong is our intent or determination to apply it in our strategy and action.

If this score is low, then it means either we are not clear or focused about our core competence or even if we are clear, we hesitate and we do not have strong intent to pursue our mission in life. The Desire trigger means, that in order to fulfill our mission in life, we cannot do that in vacuum, we have to forge partnership with other people, with the world at large, and together we must pursue common goals or common ideas.

When Desire trigger is low, it will mean that either there are no clear desires, or very low level of desires or there are no commonalities of goals, or there are impractical desires.

Synthesis between Desire trigger and Dharma trigger will be achieved when there are commonalities of goal both at qualitative as well as quantitative level.

If both scores are higher, then this synthesis will produce a very high level of satisfaction, contentment, and harmony in life. If Dharma trigger score is higher than desire trigger score, it will signify, that some of the desires will be modified, curtailed and compromised to manifest the pursuit of riotousness more over pursuit of sensual pleasures.

If desire trigger score is higher than Dharma trigger, it will signify some of the sense of righteousness will be sacrificed at the altar of sensual pleasure.

If both are more or less at equal level, but high score, it will mean, a perfect harmony and balance and also high level of satisfaction and happiness.

High score for Dharma trigger over Desire trigger in married life may mean, one will be too dominating to impose one's goal over his/his spouse and will be totally insensitive to his/his spouse's goal and physical and emotional needs.

In the reverse case, the spouse will be too dominating and the person will meekly surrender his/his goal, the physical and emotional need to his/his spouse.

In the process, the marital life will lose all its passion and the person will also not be able to manifest or pursue his/his mission in life properly.

### **The Struggle of second pair -**

This is the struggle where on one hand you are trying to build and accumulate wealth, whatever be the nature of your wealth, money, property, knowledge, health, prosperity of family all that is known as worldly creations and possessions and on the other hand, the stars are trying to limit or destroy your worldly possessions through disease, old age and death because all material things come apart, and all things must return to their component, because on the final day of reckoning, we cannot take with us any of our worldly possession.

If the wealth result score is 28 or higher, it means one will have the normal urge to accumulate more and more of worldly possession of our choice as one progresses through life.

If the salvation result score is 28 or higher, it means one will progressively get detached from worldly duties, responsibilities and worldly possession either from a conscious act on one's part or through unexpected karmic retributions triggered by planets in the chart. If the wealth score is less than 28, then such person will consciously neglect the duties and responsibilities to earn livelihood or to look after one's family. Many such people will actually avoid marriage so as not to take any responsibilities.

If the salvation score is less than 28, then such person will be too attached to one's possession and too much materialistic, and as such will be completely at a loss and devastated if confronted with any karmic punishments like accident, injuries, death and material losses in life.

If wealth score is higher than salvation score, the person will be more materialistic than spiritual. If salvation score is higher than wealth score, the person will be more ascetic and spiritual. If both are at the same level, then there is a balance and harmony.

In our normal life, a high score of 8th house salvation score over 2nd house or wealth result score is not desirable. It is desirable only for those, who have taken a conscious decision to live a life of Yogi or an ascetic.

### **The Struggle of third pair -**

This is the battle, which decides where you will direct your efforts, initiative and courage either towards pursuit of pleasure and desire or towards pursuit of vocation and your mission in life.

If the score is higher than 28, it indicates that whatever you do, your level of efforts will be very high. Once, you have decided to pursue something, you will be steadfast and will not spare any efforts to achieve your goals.

If the vocation seed score is higher than 28, it indicates that your efforts and initiative will be totally guided by your sense of right and wrong. You will usually never pursue any goal, which will not be permitted by your sense of righteousness.

If the desire seed score is lower than 28, then there is definitely a problem with the level of efforts that you put to achieve any goal in life. You need to consciously improve your efforts and you will have to be more consistent with your efforts.

If the vocation seed score is lower than the 28, then you are definitely unlucky. Your background, your education, your parental support, your value system, all may have a role to play. You should make conscious efforts to seek guidance from superior people or books to improve your value system.

If the desire seed score is higher than vocation seed score, it could mean you are too ambitious, and your desires may be unrealistic or much beyond the scope for fulfillment. You have to make continuous efforts to reach anywhere near your goal.

If the vocation seed score is higher than the desire seed score, it could mean you are extraordinarily lucky. Destiny will always favor you and it can often happen that other people will make efforts and work very hard to fulfill your desires.

If both are equal, then it simply means that what you sow is what you shall reap in this life.

#### **The Struggle of fourth pair -**

The meaning of this struggle is that on one hand you have your worldly status, your social background and your professional status and on the other hand, is your need for peace, contentment, emotional and material security vis-à-vis your worldly status.

If the salvation trigger score is higher than 28, then you are content with your worldly status, and you may not make your extra efforts to improve your worldly status any further.

If the wealth trigger score is higher than 28, then it signifies that you will never rest at peace with your existing worldly status, you will continuously push yourself to attain higher and higher level of worldly status in this life.

If the salvation trigger score is less than 28, then you are never content, and you will never feel emotional and material security in life. The irony is that this feeling does not lead to greater efforts but it only increases unhappiness, insecurity, frustration and depression. If the wealth trigger score is less than 28, the person is simply lazy and too content. There will be no initiative or drive to improve one's worldly status in life. Such people never try their luck by trying out different things or different jobs or different places.

If the wealth trigger score is higher than salvation trigger, such people will be highly materialistic; will be full of energy and drive. They are always active. Profession and career are going to be the most important factor in life at the cost of domestic bliss and harmony. They will seek power and status throughout their life.

If the salvation trigger score is higher than wealth trigger, such people will be content and happy. Family life, domestic bliss and harmony will be the most important factor and source of happiness in life. Worldly status, power will be secondary source of happiness in life.

If the scores are equal, then such people have been able to achieve a balance and harmony in this struggle.

#### **The Struggle of fifth pair -**

The meaning of this struggle is on one hand one is trying to be constantly creative and trying to add volume to their efforts vis-à-vis how much results they are achieving or are being able to fulfill their worldly desires. Results are important but equally important is that it must be achieved through creative and innovative efforts.

If Vocation result score is higher than 28, then creativity, innovative action will be their second nature. They will have great passion and zeal in whatever they undertake. Such people are usually lucky in love and romance, and usually achieve a high level of skills or education in whatever field they choose. Their speculative instinct to do something out of ordinary is also high. Their sense of discrimination between right and wrong Dharma and Adharma will also be very high.

If the Desire result score is high, such people are born lucky. They usually fulfill most of their desires in life with least efforts. They are happy go lucky people and are usually very successful materially.

If the vocation result score is less than 28, such people will lack creativity and innovation in their efforts. They may achieve results, but may not get any pleasure or a sense of fulfillment in their vocation. Their career or profession will be very routine and a drag in their life.

Their sense of discrimination will be very low, and such people get into reckless gambling or get rich quick schemes and loose heavily in life. They usually have unfortunate experiences in love life. They are also unlucky so far as happiness from progeny is concerned.

If the Desire result score is less than 28, such people usually do not get proper rewards or compensation for their efforts. They have to work much harder than others to achieve success or to fulfill their desires in life. Failures in their mission will often frustrate them. They must make extra ordinary conscious efforts to achieve material success in life.

If Vocation result score is greater than desire result score, then they are happy and have self-fulfillment in their vocation or career. They also receive greater social recognition for their efforts.

If desire result score is higher than vocation result score, they may be materially highly successful but they do not get commensurate social recognition in life. Their career or vocation will not give them enough self-fulfillment.

If both are high and at the same level, then that is the best combination in a chart. Both rewards as well as self-fulfillment will be at the highest level for such people.

### **The struggle of sixth pair -**

Among all the pairs of opposites, this is the trickiest and most challenging struggle between the pairs of opposites. On the one hand, wealth seed signifies the disease, obstacles, enmities and challenges as well as your capacity to overcome such obstacles in your pursuit for wealth in life. The 6th house connects the self with the material or the physical world. Whereas the 12th house the Salvation seed detaches the self from the physical world and all that is material or material possessions that we seek.

Hence this is the struggle between the process of creation of wealth and the process of destruction of that wealth. The Salvation seed score signifies expenditure and losses. It signifies detachment from our secure home and motherland to an overseas or foreign land. It signifies the sexual act where our seeds get detached from ourself. It signifies, prison, solitary confinement, monastery, where we are banished from the living world.

This also signifies the seeds for final Salvation. However, a high score is desirable only for people who are seeking true salvation in life. If other conditions are favorable then this high salvation seed score can give great spiritual development in life.

If the 6th house score is higher than 28, then we will have the spirit of fighting and we shall be able to overcome all disease, disease, which means disturbance of ease, physical ease and mental ease. Disturbance caused by physical disease, enmity, debts, lack of wealth, win in competition, victory over enemies and all that.

If the 12th house score is higher than 28, then we will enjoy sexual pleasure, in Vedic astrology, it is euphemistically described as enjoying bed comforts. It will mean, we will spend all our money to enjoy pleasure or spend it for good purpose like charity and rightful deeds. But the bottom line is we shall be detached from our wealth and will not save or accumulate wealth.

If the 6th house score is lower than 28, then we shall be bogged down by all kinds of disease, which will disturb our physical and mental ease. Our enemies will be victorious, we shall suffer from lack of wealth, will not be able to clear our debts either caused by us or inherited by us. We shall not be able to raise any debts. Our subordinate will not listen to us. We will loose in litigation and our enemies will get better of us.

Finally we shall have no fighting spirit or desire to overcome the disease and obstacles that will come on our way in our pursuit of wealth unless we make extraordinary efforts to do so. The planets will play their part to create those obstacles and disease all the same. If the 12th house score is less than 28, then the 12th house impacts will be less in our life. To that extent, it is desirable that 12th house score should be less for all ordinary and normal life script.

However, in today's global environment, such people may not be very successful in their overseas or foreign connection.

A low 12th house score may not give great sexual satisfaction and can in fact create a sexually repressed personality, which in turn effects his/his level of peace, contentment and happiness. If 6th house score is greater than 12th house, and it is a high score does indicate material success though after a lot of struggle and battle.

If 12th house score is higher than 6th house, it indicates detachment and not much material success but a great potential for spiritual development and salvation. A high 12th house score also indicates that such people will not achieve success in their motherland and may settle overseas for a long period of their life.

If both scores are more or less at the same level and also high, then it indicates a very good balance and harmony. Such people will struggle and through their own efforts will achieve a level of material success in their life, and after that, in due course of time, will also get detached from the material/physical possession and wealth to seek true salvation in life.

### **Answer To Concern:**

Regarding your primary concern, I would like to inform you that regarding the health and finance there is already indication in the report. Particularly, the main period of Venus could be able to guide you in this regard. However, regarding your concern to be able to live with your son and receive care from him, here I would like to give you indication about the same. If you see the creativity index value in the table of 10 year future Karma index, which index happiness from progeny. Then you will find out that except the year 2011 always the index value of 5<sup>th</sup> house is negative. So, the chances are low for getting good care from son OR spending quality time with him. Even then, during the sub period of Rahu your son might join to you OR at least he could make sure to take good care of yours. At the same time, during the last days of your life you could be able to spend time with him so, he could return back to India or not but he would try to be with you. Specially, the whole sub period of Jupiter you would spend with your son under his care and support. However, returning back to India

could be only decided by the birth chart of your son so, I could not give you any final comment on this regard.

**Astrological Remedies:**

Currently you are under the main period of Venus from 7<sup>th</sup> October 2000 to next twenty years. So to take advantage of this main period of Venus in the every aspects of your life, you should wear a 0.5 to one carat diamond. It must be mounted on a gold or white gold ring and worn on the middle finger of right hand. The gem must be put on first on a Friday morning.

At present you are under the Shani Dhaya till 4th August 2012 which would create some problem in your health so you should wear a hanuman kavach to minimise the bad influence of planet Saturn.

On behalf of cyberastro.com  
Satrajit Majumdar  
CEO

[Please read http://www.cyberastro.com/asp/disclaimer.asp](http://www.cyberastro.com/asp/disclaimer.asp)