

YOUR HOROSCOPE REPORT

Introduction:

Vedic astrology provides a roadmap to the strengths and weaknesses inherent in an individual. Vedic astrology horoscope chart can reveal spiritual and physical abilities to past life Karma, relationships with family, friends, spouse, or partners, as well as celestially prescribed professional, marital, or social destiny. Vedic astrology also has its technology of astrological remedies. It is not enough to predict what will happen good or bad in a person's life, Vedic astrologer also prescribes use of Gem stones, Yantras, Mantras to help the individual redirect the course of his/her negative Karma and/or enhance their positive Karma.

What is a horoscope chart?

A horoscope chart in Vedic astrology essentially indicates the position of all planets at the exact date, time and place of birth for a person in terms of their longitude with respect to the 12 zodiac signs. It also indicates the person's unique signature which is the rising Zodiac sign and the degree, which is the exact eastern horizon from the place, where a person is born at the exact time and date of his birth. This is called the Ascendant of the person. Ascendant is the most unique signature of a person. The Ascendant sign in the horoscope is called the first house of a person. This is followed by second/third till 12th house of the chart in the anticlockwise direction. Ascendant, Planets and Houses are the three elements of horoscope chart. There are different formats in Vedic astrology to represent a horoscope chart. These formats are either fixed sign position or fixed house position.

Your Horoscope Chart:

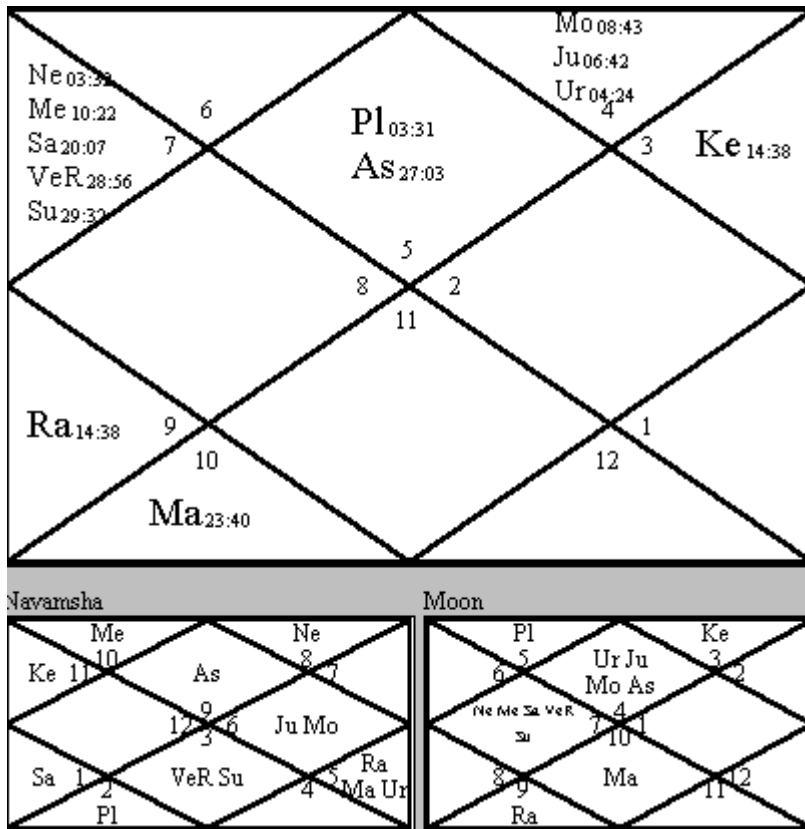
Name: XYZ

Date of Birth: MM/DD/YYYY

Time of Birth: 00:00:00

Place of Birth: City, Country

Horoscope Chart



Your Chart Data:

Your Ascendant: Leo 27 Degrees 3 minutes

Sun (Su): Libra, 29 Degrees 32 minutes

Moon (Mo): Cancer, 8 degrees 43 minutes

Mars (Ma): Capricorn, 23 degrees, 40 minutes

Mercury (Me): Libra, 10 degrees, 22 minutes

Jupiter (Ju): Cancer, 6 degrees 42 minutes

Venus (Ve): Libra, 28 degrees 56 minutes

Saturn (Sa): Libra, 20 degrees 7 minutes

Moon's North Node, Rahu: Sagittarius, 14 degrees 38 minutes

Moon's South Node, Ketu: Gemini, 14 degrees 38 minutes

Uranus (Ur): Cancer, 4 degrees 24 minutes

Neptune (Ne): Libra, 3 degrees 32 minutes

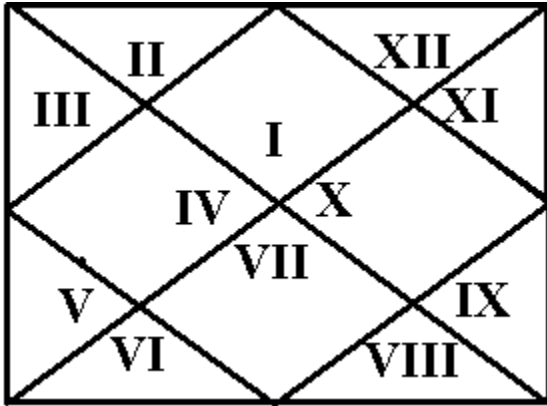
Pluto (Pl): Leo, 3 degrees 31 minutes

There are 7 planets from Sun to Saturn. There are two nodes of Moon which by definition will be always 180 degrees from each other in the horoscope. These are not planets, but just two points like Ascendant in the chart, but they are treated as planets and their movements are captured with respect to the zodiac signs. In all Vedic astrology calculations and predictions, we deal with this set of 9 planets including the two nodes. The trans Saturn planets (Ur, Ne and Pl) are not included in the calculations and predictions of Vedic astrology. These does not affect either the accuracy or in substance, either the calculations or predictions in Vedic astrology.

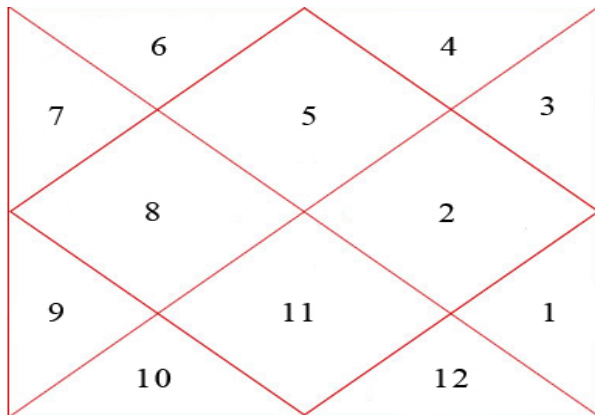
The north Indian format of a horoscope is a fixed house position format.

Explanation of horoscope chart:

House positions



**Explanation of Your Horoscope Chart:
Sign Position**



In any chart in this convention, House positions are fixed and their numbers are indicated by Roman Numerals. First house is the birth ascendant and in anti clockwise, the rest of the houses follow. Decimal digits in each house indicate the number of the zodiac signs.

The relationship between Planets and the signs:

There are 12 Zodiac signs as most of us are familiar with. Each of the 12 Zodiac signs is ruled by one of the 7 planets from Sun to Saturn. Then these planets are called lord of the particular Zodiac sign. Sun and Moon rules only one zodiac sign each. The rest of the 5 planets rule two Zodiac signs each. For those of you, who are not familiar with this, we give below a table which lists out all the Zodiac signs and their ruling planets. Also an important hypothesis of Vedic

astrology for each of the 7 planets and also for the two nodes, there is one sign in which the particular planet gives it's maximum positive results, which is called it's sign of exaltation and the sign which is it's opposite or 180 degrees apart in the Zodiac gives the most negative results of the specific planet, and that is called the sign of debilitation of the planet.

Every planet has some positive results as well as some negative results. Moon, Jupiter, Venus and Mercury are considered as naturally beneficial planets in a person's chart. Sun, Mars, Saturn, Rahu and Ketu are considered as naturally malefic planets in a person's chart.

Later on in this report, we will also discuss that for every ascendant some planets because of their ruler ship, will be considered functionally beneficial planets for the chart or functionally malefic planets for the chart or they will be functionally neutral planet for the chart irrespective of their natural benefic/malefic status.

Further every sign is characterised by it's sign type as well as by it's sign element. There are 3 types of Sign types called Cardinal, Mutable and Fixed. There are 4 types of Sign elements called Fire, Earth, Air and Water. Between them they give specific characteristics to each of the 12 zodiac signs.

Sign Number/ Sign Name /Sign Symbol/ Ruling Planet / Sign Type/ Sign Element
Characteristics of different sign types and sign elements:

Sign	Sign No.	Ruling Planet	Sign Type	Sign Element
Aries	1	Mars (Ma)	Cardinal	Fire
Taurus	2	Venus (Ve)	Fixed	Earth
Gemini	3	Mercury (Me)	Mutable	Air
Cancer	4	Moon (Mo)	Cardinal	Water
Leo	5	Sun (Su)	Fixed	Fire
Virgo	6	Mercury (Me)	Mutable	Earth
Libra	7	Venus (Ve)	Cardinal	Air
Scorpio	8	Mars (Ma)	Fixed	Water
Sagittarius	9	Jupiter (Ju)	Mutable	Fire
Capricorn	10	Saturn (Sa)	Cardinal	Earth
Aquarius	11	Saturn (Sa)	Fixed	Air
Pisces	12	Jupiter (Ju)	Mutable	Water

Cardinal Types

Cardinal or Active types show the positive, active, dynamic, initial or guiding phase of their respective element. It is the principle of movement, gives impulse, direction, and expression; but may cause disturbance, agitation and too forceful or too frequent action.

Cardinal types or those who have planets predominately in Cardinal signs are people of action. They are positive, expressive, outgoing and have a high sense of achievement and accomplishment. They are wilful, aggressive, impulsive, and dynamic and often become successful as leaders. Most high achievers and executive types are of this quality. However, they can burn themselves out as a result of excess activity, and can be insensitive to the needs of others.

Cardinal types need to cultivate more sensitivity, flexibility, patience and introversion and develop more consistency and stability.

Fixed Types

Fixed types show static, stable, neutral, formal or enduring phase of their respective element. It is the condition of form or substance; it gives continuity and consistency; but it may cause inertia, resistance and stagnation.

Fixed types or those who have planets predominately in Fixed signs are firm, stable and determined in who they are and what they do. They like to continue, pursue and uphold things. They are quite settled in themselves and often unwilling to modify their opinions or question themselves. They are consistent, have strong faith and do not waver in their beliefs. However, they can be obstinate, fixated and incapable of accepting any other point of view but their own. They are often possessive and may accumulate much in life, finding it difficult to let go.

Fixed types need to develop more initiative and attempt more new things, particularly new ways of looking at things. They need to be more sensitive, adaptable and open. They also need to make certain that what they are holding on to is to the truth and not just some pattern of negativity, emotionality or selfishness.

Mutable types

Mutable types swing between Cardinal and Fixed. They are flexible, adaptable, and capable of many things. They often have many talents, interests, curiosities and skills. They are prone to be interactive and may find it difficult to act. In addition they may be inconsistent and unable to stick to things. They are often mental types who like to think, calculate, worry or reflect and they can become too introverted or overly preoccupied with themselves.

Mutable types need to have more initiative, daring and willingness to act. They need to set aside their thoughts and work through their actions. Above all, they need to direct their sensitivity in a more conscious direction so that things do not so easily disturb them. They need to use their sensitivity consciously as a tool rather than have it react against them unconsciously.

Sign Elements.

Each sign further relates to one of the four elements of Earth, Water, Fire or Air. Known as Bhuta or Tatwa in Vedic Astrology, a planet will take on the sign characteristics when occupying that specific sign.

How the 7 planets are distributed among different sign types and sign elements in your Horoscope:

Table of planets sign type and sign elements

Type of Sign/Elements of Sign	Fire	Air	Earth	Water
Cardinal		Su, Me, Ve, Sa	Ma	Mo, Ju
Fixed				
Mutable	Ra	Ke		

In your chart the dominant sign type is Movable Sign type. The dominant sign element is Air element. Ambition, Change and Creativity will be the three most motivating factors in your life.

Planets their strengths and their functionalities in your horoscope:

Vedic astrology has developed a complex mathematical model to determine the strengths and functionality of each planet in your horoscope. We have first tried to explain the methodology on how to judge the overall strength and their beneficial or challenging role in your chart. Basically Vedic astrology calculates 3 types of strengths of each planet from your horoscope. They are “Shadbala” which gives the absolute modular strength of each planet irrespective of whether it is for good effects or bad effects in your life. The second strength is “Vimsopak Bal” which decides how much beneficial or challenging the planet will be in your life during its period/sub-periods/sub-sub periods. It is not that all planets are effective at all time in your life. Each of them will have definite time windows in your life when they will be effective. We will talk about planetary time periods later in this report. The third strength will be how the planet will be beneficial or challenging during it’s transit from one sign to another as they are in constant motion. This strength is called the “Ashtakbarga Transit” strength.

Further Mars, Mercury, Venus, Jupiter and Saturn sometimes during every year appear to move backwards called retrograde motion for some time. If a person is born when some of these planets were retrograde then in the horoscope chart it will be indicated it is retrograde. As a general thumb rule, retrograde planets are less effective than planets in direct motion. Also retrograde planets have some special effects throughout our life. Sun and Moon never have retrograde motion. Rahu and Ketu are always in retrograde motion. Also in the natal chart, a sign may contain too many planets. If a particular planet is too close to Sun within the same sign it is called combust planet. The planet loses it’s own strength by being too close to Sun.

We now calculate the overall strength of all the planets in your horoscope and their functionality in your life. We have also explained our methodology to calculate the quantitative strength of each planet in your horoscope, and have presented the result in following table.

The Planet Table

Planet Name	Location Sign	Location House	Ruler ship House *	Natural Benefic/Malefic	Functional Status	Special Status	Planet Strength** SB(A)	Planet Strength** VB(B)	Planet strength** AB(C)
Sun	Libra	III	I	Malefic	Auspicious	Debilitated	0.84	7	4
Moon	Cancer	XII	XII	Benefic	Neutral	Own	1.22	19	5
Mars	Capricorn	VI	IV & IX	Malefic	Most Auspicious	Exalted	1.16	15	3
Mercury	Libra	III	II & XI	Benefic	Inauspicious	Neutral	1.03	9	5
Jupiter	Cancer	XII	V & VIII	Benefic	Auspicious	Exalted	1.03	10	5
Venus	Libra	III	III & X	Benefic	Inauspicious	Own	1.42	14	3
Saturn	Libra	III	VI & VII	Malefic	Most Inauspicious	Exalted	1.36	10	3
Rahu	Sagittarius	V	---	Malefic	Auspicious	Neutral	----	10	----
Ketu	Gemini	XI	--	Malefic	Inauspicious	Neutral	----	8	---

Remarks

® Stands for Retrograde. © for Combust

Rahu/Ketu are always retrograde.

*Planet strength by method A is Shad Bal and method B is Vimsopaka Bal and method C is Ashtakabarga.

By method A, SB or Shad Bal strength can be maximum 2. This measure of strength tells us the relative impact of planets in our life irrespective of its nature (good or bad).

By method B, VB or Vimsopaka Bal strength can be maximum 20 and minimum 0. This also gives the overall beneficial nature of the planet in our life particularly in its period and sub period operating.

By method C, AB or Ashtakabarga can be maximum 8 and minimum 0. At 8 the planet is totally auspicious and beneficial on our life. At 0, the planet is totally inauspicious in our life.

Ashtakabarga strength gives us a more definite indications of how the planet will behave in its transit and in its association with other planets in the chart.

INTERPRETATION OF ASCENDANT, SUN SIGN, MOON SIGN AND OTHER PLANETS IN DIFFERENT SIGNS IN YOUR BIRTH CHART.

THE THREE PIVOTS OF YOUR HOROSCOPE:

Your *Ascendant*, *Sun Sign* and *Moon Sign* are like a TRIPOD on which your entire life is based.

We would address these for you one by one:

YOUR ASCENDANT:

Ascendant is the most unique signature in our horoscope. Ascendant (Janma Lagna) in our chart signifies the way we shall express our body, mind and soul to the world at large in this life.

Your Ascendant is Leo which is ruled by Sun. It is a fixed sign with fire element. As sign number 5, it shows a need for order and harmony around a central will and character. In life together, this central will must be around you which your partner must tune himself in. You will possess a strong sense of self, character, and will in life. You basically know who you are and will want others to recognize it including your life partner. You may often appear to be proud, bold, ambitious and aristocratic, which will be the most attractive part of your personality that your partner will relate to. Your response to your partner will often be dramatic, sometimes vain, in your self-expression. You would always like to draw the attention of others to yourself, and be the center of attention. In life together, you will constantly expect the strokes of approval from your partner. You will have a strong and noble heart, but can suffer from too powerful emotions or too much need for attention. It is difficult for a Leo person to sustain a relationship unless the partner is somewhat inferior to her own status whether socially, economically or at the intellectual level. You will have a high standard for yourself. For this reason, you can become very dejected if you fail or do not succeed as much as you wish. Such fallen Leo types can be most miserable. It is during such crisis, her partner has to be very supportive to sustain the life together. You must be aware of your tendency to dominate over others specially over your partner in life together. If you become too dominating, then specially a partner may in turn rebel against you and can walk out of the marriage.

YOUR SUN SIGN:

The Sun can be the warm light of your heart that shows the way, or it can be the harsh light of your ego, which obscures it. Being true to the Sun-that is, following the deepest dictates of your hearth-will enable you to manage not only your relationships strongly and successfully, but all other areas of your life too. Following the path that is illuminated by your Sun sign will help you do just this. Regard this as a directive from the highest command. Merely following your ego that is, a false sense of what you are will blind you to who you truly are.

NATURE:

The main characteristic in your nature is judgment and analysis. You analyze every situation in its minute details before deriving any conclusion from it. This quality of yours will always make you take a stand in favor of just causes. However, another important trait in your character is your peace loving nature and your general apathy to take on any hassles.

Thus, sometimes you will compromise with injustice and wrong doings for the sake of peace and harmony. This quality of yours will give you great social skill and social acceptability. Justice and harmony will be the two major driving forces in all your actions, whatever, may be your vocation, you would always strive to achieve equality with justice and thereby increase happiness for everybody as much as possible.

You will have a natural talent to acquire and absorb any new body of knowledge by your strong analytical power. If circumstances are favorable, you may devote your entire life to research and academic pursuit, even if circumstances are not favorable for pursuit of academic research in your life, you will still display a great scientific and analytical bent of mind. You will have definite opinion about everything and as a result, there will never be any hesitation in any of your actions or thought. Because of your analytical power, you will have a great sense of perspective

and vision about future.

At some stage in your life, you may develop great spiritual and also intuitive power. Thus, if you consciously develop this part of your nature, you may achieve spectacular spiritual success in your life.

However, because of your strong scientific temper and rely only on physical evidences, you may ignore some of the supernatural and extrasensory experiences in your life and you may not cultivate these traits at all and people will not usually realize your stray perceptive power.

The main weakness in your character is your love for peace and comfort. You just cannot stand disharmony or differences, as a result for the sake of peace and pleasure, you will often compromise on your principles and you may also be swept away by your desire to pursue sensual pleasure even at the cost of every other interest in your life. However, as and when you will realize futility of such meaningless pursuits, you will be able to put a brake and make proper course corrections in your life.

As already mentioned, you will have a definite opinion on every thing and you will be willing to change them only if somebody can convince you through cold logic and rational arguments.

You will generally be very polished and will have sophisticated manners. Deep down your heart, you will be more concerned with inner joy than be gratified with purely material and sensual pleasures. You will have a slightly egoistic streak in your nature but by and large you will believe in fair pay and justice.

LUCK:

You can be described as a lucky person who will be favored by destiny. There will be ups and downs in life, but you will never be deprived of material prosperity and comfort in life. It is quite possible that you may have sudden gains from lottery, gambling or from any other speculative activity. However, you may not care for money at all, as a result you may never be able to save and accumulate wealth in your life. Marriage or close companionship of another person in your life will be generally responsible to shape your destiny and future life-be it good or bad.

IMPORTANT CHANGES IN LIFE:

Significant changes may happen in your life at the age of 16, 24, 30, and 33.

YOUR SPECIAL POTENTIAL:

You will have multifarious talents and natural skill to master any branches of science and arts. You should excel in at least one of the artistic disciplines among music, painting or literature. You can be successful in legal profession. If you pursue a scientific line, you will be able to show your mettle in original scientific research. In case, you pursue medicine, you will opt for a specialized branch of medicine. In fact you will shine in those professions which demand great

research and analytical abilities. Computer software will be a very suitable line for you.

MARRIAGE:

You aspire for domestic peace and harmony but you also have a natural tendency to analyze every action and attitude of your partner. Therefore, it is important for you to accept that we are all made differently and therefore cannot be carbon copies. Compatible signs, for love and romance, are Gemini and Aquarius.

HEALTH:

On the whole, you will have a healthy constitution and disease should never worry you, if you maintain a healthy regimen. However, at a later stage, you may suffer from kidney and genital illness. This may lead to migraine and neurological problems. You may also suffer from backaches and spondylitis.

YOUR MOON SIGN:

Moon in our horoscope shows our general propensity for relationship and how we will interact others. The Moon gives us sensitivity of human feeling, a strong social consciousness, and a need to exchange emotions. It makes us require that our feelings are recognized in life and shared by others.

Your Moon sign is Cancer. For you life means always having someone close to you, be it a whole family or one other in particular. You simply do not like being alone, and can often limit or undersell yourself because of such a need to belong. Being alone is rather like being a little bird, who has been tossed out its nest by a cuckoo. But should this highly unwelcome situation come upon you, it will be because yourself diminishing neediness has reached a critical point where those needs must be looked at for what they are and why they have come to rule your life so much.

[Interpretation of Other Planets as per their location in different Zodiac Signs in your horoscope:](#)

Mercury in Libra:

Refined; broad minded; quite dispassionate; fond of invention, musical talent, analytical and mathematical ability.

Mars in Capricorn:

Courageous; responsible; has powerful and famous friends; has ambitions for both public life and wealth; thoroughly learns any subject; marries someone older or from a lower social class early in life.

Jupiter in Cancer:

Wealth derived from real estate; has powerful but inconsistent friends; wealth gained by popularity and by creating a brand around his/her own self. Will encounter a peaceful, honorable death abroad or far from his/her birth place.

Venus in Libra:

Sympathetic; highly creative; marries well; profits through marriage or partnership; has talented children; appreciates cultured amusements' social functions' and the friendship of philosophical or literary people

Saturn in Libra:

Refined, highly responsible and disciplined; Has an aptitude for debate and controversy; finds sorrow at the loss of a deep attachment' reaches a high position and can then fall to disgrace; delays marriage; opposite sex may be the source of many problems.

Rahu in Sagittarius:

Rahu will magnify the desire for financial rewards as well as spiritual rewards; Will extensively travel to foreign countries and may eventually settle there. Relationship with father may be troubled.

Ketu in Gemini:

Possesses a mind that is creative and full of new ideas ; troubles with younger siblings and friends; skin ailments; unprecedented ideas and activities.

Retrograde, Exalted and Debilitated planets in your horoscope:**Your Venus is Retrograde**

Venus retrograde indicates an unusual interest in love. You don't seem to be stimulated by customary means. Socially, you don't fit into the mainstream. You can swing between opposites - averse or perverse. Often you may turn to religion because it seems easier to love God – and God does have a lot of love. Your marital life may not be a happy one. Being accommodative with your business partners would be difficult for you. Finding a fulfilling and lasting relationship is a challenge for you.

Your Mars is in Exaltation

You will enjoy a great career, which will bring you wealth, fame and power. You will deal with your opponents with aggression and succeed in your mission with ease. Your spiritual bent of mind may see you undertake pilgrimages during the later half of your life.

Your Jupiter is in Exaltation

Luck is in abundance in your life. Your career will be blessed with fame and success. Success in all your endeavors will be natural as well as fame, honor and wealth. You will have good eyesight and hearing power. Success would come your way in foreign land.

Your Saturn is in Exaltation

You will be extremely wealthy and powerful. You will be a leader and may enjoy great political success. You will fulfill your dreams, which may affect large portions of society. You will benefit from your eldest sibling, who may be powerful and prosperous. You will have many friends who are powerful, prosperous, refined, or spiritual. There is a deep love of philosophy, spiritual disciplines and all kinds of higher knowledge.

Your Sun is in Debilitation

Sun is likely to make you out of balance. It would apply brakes to your motivational qualities and hence you would not be able to face difficulties in life. You would shirk responsibility and you will turn to people to suit your purpose. It will make you over indulgent in pleasures and an ineffective person. Managerial skills would be somewhat lacking in you. On the health front, it would result in stomach ailments, lower back pain, weakness of bones, headaches etc.

Houses in your Horoscope:

It is the *House* which signifies different aspects in our life. How these different aspects of our life will manifest are determined by the planets that are located in each house as well as the lords of houses which are located in a particular house and also the planets which aspect the specific house in our chart. Strength of each house is determined by all these factors. Good and bad result for the aspects signified by each house will depend on the strength of each house as well as the strength of the planets related to each house as described above.

House No. 1:

This is also known as Ascendant or “Lagna” This house presides over your appearance, character, temperament, and how are you perceived by other people. It also governs the brain and the head. This is a pursuit of Dharma (Vocation) house. It is the “dharma” trigger house. It signifies how you will identify and manifest the true purpose of your life.

In your horoscope, your 1st House is Leo. You will be somewhat of an exhibitionist or a showman. You are born a natural leader like the lion in the jungle. Your irritability can turn into arrogance and ego. You may have a tendency to lose hair and baldness. Lord of Ascendant Leo is located in your 3rd house ‘ Libra and is debilitated. This may create a deep seated insecurity in your life. You will have a great need for acceptance from other people. Most of the time you will hesitate and procrastinate to take any new initiative for the fear of failure or what other people will think about your action. As a result you may often lose precious opportunities in your life. You will either try to dominate and force your own will into any relationship or partnership. You may not be very successful in your relationship front.

House No. 2:

This house signifies an individual’s speech, wealth and prosperity of the family. Learning and the level of truthfulness the person conveys. This is a Pursuit of Artha (Wealth) house. It is Artha result house. It signifies your potential to accumulate wealth in your life. Wealth can be money, assets, knowledge, family and prosperity of family.

In your horoscope, your second house is Virgo. You will have financial gain through artistic and creative activity. You may also gain from value added retail functions. You will be prudent and cautious in your professional spending. You may suffer occasional financial difficulties.

House No. 3:

This house presides over personal courage and initiative, the desires in life, creative talent and interests, and the individual's relation with siblings. This is a Pursuit of Desire and sensual pleasures house. It signifies the seeds of desires from basic sexual desires to all kinds of desires of name, fame and wealth in life. It is Pursuit of Desire seed house, where the desire is seeded first to prompt the person to take initiative and to make efforts to form partnership with other/others depending on the desire to fulfill it. No desire can be fulfilled all by oneself.

In your horoscope, your third house is Libra. You will prefer diplomatic and cordial communication. You may enjoy close and harmonic relationship with siblings and friends. Life's desires will rely on subsequent social interaction. Your 3rd house is full of planets, which will pull you in different directions. Lord of Ascendant Sun is debilitated in 3rd house. You will have an obsessive desire to be accepted by people. Lord of 11th and Lord of 2nd house, Mercury is in 3rd house. To create wealth as well as to accumulate wealth and to achieve financial security in life will be the most important desire in life. Lord of 3rd and Lord of 10th house, Venus is located in your 3rd house. You will take initiative and your efforts will consist of to have a profession and career dealing with beautiful and luxury life style items and goods either created by you or you will deal with very high valued branded and exclusive items created by others. Lord of 6th and 7th house Saturn is exalted in your 3rd house. You will be both successful as well as fall out in forging life-long partnership to fulfill your sexual desires and life partnerships both in your personal life as well as in professional life.

House No. 4:

House no 4 governs a person's relationship with her mother or motherland domestic bliss and harmony. It signifies real estate and property and all material comfort and luxury. All that is necessary for a person to achieve both emotional and material security and contentment in life. This is a Pursuit of Moksha or Salvation in life. It is Pursuit of Salvation Trigger house. Only when a person materially and emotionally content, she can think of pursuing Salvation and take the necessary path towards salvation.

In your horoscope chart, your 4th house is Scorpio. A childhood trauma involving a family member or parent deeply affects home life as an adult; must control all aspects of home life before she can achieve physical and emotional security and contentment in life.

House No. 5:

House no. 5 presides over an individual's professional education. It governs birth of progeny, creative work, speculation, level of intelligence, past life karma, love and romances, and entertainment interests. It is Pursuit of Dharma" result" house in our chart. How successful you have been to manifest your true purpose/vocation in your life will be governed by your 5th house.

In your horoscope chart, 5th house is Sagittarius. Vivid imagination and abundant creativity will be your signature in whatever activity you undertake. Rahu in your 5th house indicates minimum children or no children at all because of past Karma. You could be quite adventurous and daring in your love and romantic relationships. You may have mixed gain in speculative activities.

House No. 6:

House no. 6 rules your day to day pursuit of wealth and the challenges and obstacles that you must overcome in your day to day efforts towards pursuit of wealth. It signifies the Pursuit of wealth” seed” house. Both the quality of seeds as well as the quantity of seeds that you will accumulate will decide your status and success in your profession and career.

In your horoscope chart, your 6th house is Capricorn. This signifies heavy work responsibilities; very organized and structured work habits; best at working alone or with very few sub-ordinates; rarely ill, but diseases if at all will be chronic or long term; loving, caring pet owner or gardner. Lord of 4th house and lord of 9th house, Mars is exalted in your 6th house. This signifies with your focus, determination and result orientation, you will be highly successful in whatever profession and career that you choose for yourself.

House No. 7:

House no. 7 governs a person’s marriage, spouse, passions, business or legal partnerships, and homes in foreign places. It is Pursuit of Desire “trigger” house, because a person needs to form partnership to give shape and to fulfill whatever desires he /she wishes to fulfill in life.

In your horoscope chart, your 7th house is Aquarius. You will have strong potential for more than one marriage, or may not marry at all. In professional life it also indicates multiple partnership to carry on different agency business. It also indicates sudden or unexpected end to partnership as well as unconventional partnerships.

House No. 8:

House no. 8 governs over an individual’s passion (both sexual and emotional), potential for accidents or chronic illness, obstacles any kinds of Karmic retribution and punishments. Joint financial life, potential longevity and death. Unexpected Karmic rewards such as unearned wealth through insurance, inheritance, legacy, spouse’s income, lotteries, and legal settlements. Final closure including salvation. This is Pursuit of Salvation “Result” house in life. After all death signifies salvation from body and freedom from all worldly miseries and sufferings.

In your horoscope chart, 8th house is Pisces. You may have difficulty in collecting on debts; distorts facts about taxes or insurance; deception may surround inheritance or legacy; depletion of spouse’s or partner’s assets. However lord of 8th house is Jupiter exalted in 12th house signify the person at late stage in life will pursue true salvation and may achieve significant progress in spiritual evolution in this life itself.

House No. 9:

House no. 9 presides over the person’s general fortune or destiny. Her father, spiritual teacher. Advanced education, religious or ideological beliefs. Long distance foreign travel. It is Pursuit of “Dharma” seed house. It signifies the seeds that we receive from our father, the lessons we receive from our father spiritual teacher and all other teachers in life to give shape to the true purpose of our life.

In your horoscope chart, your 9th house is Aries. It signifies strong interest in philosophy, religion, culture, foreign studies, or international trade; potential for fanaticism or unrealistic ideology. Lord of 9th house, Mars is exalted in 6th house signify that you will be lucky that your

true vocation will also be the same as your day to day profession and career. You will also be successful in your efforts in international trade and business.

House no. 10:

House no. 10 presides over one's profession, social and public standing, business acumen, and father's financial condition. This is Pursuit of wealth "trigger" house. This signifies your actual career or profession through which you will earn your daily bread.

In your horoscope chart, your 10th house is Taurus: Your career will be in arts, luxury items, life style items, fashion which are all ruled by Venus. Lord of 10th house, Venus is retrograde and located in 3rd house. This signifies you will achieve success in profession a little late in life after considerable efforts. But your success will depend totally on your own efforts.

House No. 11:

House no. 11 governs a person's income from a profession, career or business ventures. This signifies the level of fulfilment of your goals and desires in life. This is pursuit of desire "result" house in your chart.

In your horoscope, your 11th house is Gemini. You will be fond of tossing ideas back and forth with friends, attracts friendship with educators, writers, computer specialists, and sales people, in order to fulfill your desires.. You are likely to have many acquaintances all over the world but very few real friends. You can get involved in gossip or you can be a victim of gossip. Lord of 11th house, Mercury is located in your 3rd house. Your income will come from your own efforts and only from your own efforts.

Ketu is located in your 11th house. This signifies that you will be successful in your undertakings and you will be fortunate in gaining wealth. However you may have strange friends and you may experience difficulties with them.

House No. 12:

House no. 12 governs the person's spiritual nature, the things that an individual does not personally control. It also signifies financial expenditure and losses. In fact it signifies the process of all kinds of detachment from material possessions. This is why this is known as Pursuit of Salvation "Seed" house. Because only by getting detached from material things in life one can hope to pursue salvation in the true sense.

In your horoscope, your 12th house is Cancer. This signifies strong emotional attachment to psychology and the occult. There is potential of becoming a victim to your past; you may feel there is loss associated with emotional commitment; you may also have a clandestine or secret attachment in your life. This is another house like your 3rd house, there are many planets which may pull you in different directions. Lord of 12th house, Moon is located in 12th house. This signifies that you may be detached from your mother and motherland and settle in a foreign country. However it also signifies that you will be successful in a foreign country. Lord of 5th and lord of 8th house, Jupiter is exalted in 12th house. This signifies that you will discover your true vocation and you will be also successful in your chosen vocation. Finally at later part in your life, you will pursue true salvation in your life as mentioned in the 8th house prediction.

We have now discussed all the 12 houses in your chart. Vedic astrology has also developed quantitative methods to calculate the strength of each houses in your chart. Given below is table which gives you the strength of all the 12 houses in your chart and also calculates the overall status of each houses in your chart, and how the significances of each house will manifest in your life, whether they will signify great opportunities or great challenges in your life or not.

The House Table

House Number	Planets Located	Lordship	Planets Aspecting	Natural Signifier	House Strength (AB) X	House Strength (BB) Y	Remarks
I	As	Su	Ma, Ra	Sun	40	5.88	Ok
II	----	Me	--	Jup	22	9.39	Mixed
III	Su, Me, Ve, Sa	Ve	Ke	Mar	26	7.23	Difficult
IV	--	Ma	Ju	Mon	26	6.72	Difficult
V	Ra	Ju	Sa, Ke	Jup	28	6.91	Ok
VI	Ma	Sa	Mo, Ju	Sat, Mar	26	6.57	Difficult
VII	--	Sa	Ke	Jup	28	7.26	OK
VIII	----	Ju	Ju	Sat	25	6.94	Difficult
IX	---	Ma	Su, Ma, Me, Ve, Sa, Ra	Jup, Sun	24	5.61	Challenging
X	---	Ve	----	Mer, Jup	36	8.20	Excellent
XI	Ke	Me	Ra	Sun	30	8.35	Good
XII	Mo, Ju	Mo	Ma, Sa	Jup, Sat	26	7.21	Difficult

Remarks:

If the A. B. score is 28 or more, that house and the aspects of life, the house signifies flourish well. Greater the score, better the results. If the A. B. score is less than 28, the individual faces difficulties and suffers in life in those aspects, which the house signifies. The lower the score greater will be the difficulties and obstacles in life.

House strength by method B (Bhava Bal) signifies if the score strength of a house is more than 7.5, the aspects signified by that house flourishes more in our life.

Greater the score, better the results. The lower score greater will be the difficulties and obstacles in life. Final remark is the considered judgment about each houses made by our astrologer, who has analysed your chart.

[Your ordained life script as per your horoscope chart:](#)

The interesting thing is that each one of us works according to the divine “Life Script”, which determines to what extent and when we will pursue each of these aims in our lives. Of course, we do pursue all these aims simultaneously all through our lives. But, each one of us has a specific life script encoded in the astral configuration of the natal chart and we can get an indication of that by analyzing each person’s Vedic Astrology chart. The important thing is to discover the life script within us. The planets do act as referees and critics in this cosmic drama. They announce prizes, penalties and sometimes also put a brake on our impulses. Through astrology what we shall do is to get a better understanding of the parameters of our individual lives. We should not take it as finality because the stars show us the tendencies based on our past Karma. By doing

good deeds in this life we can significantly alter the effects of this. Present karma can enhance or minimize the influence of past karma.

Ordained Life Script Score Calculation

Pursuits	Scores
Pursuits for 'Dharma' (Vocation)	Sum of 1 st +5 th +9 th house AB scores
Pursuits for 'Artha' (wealth)	Sum of 2 nd +6 th +10 th house AB scores
Pursuits for 'Kama' (sensual pleasure)	Sum of 3 rd +7 th +11 th houses AB scores
Pursuits for 'Moksha' (salvation)	Sum of 4 th +8 th +12 th houses AB scores
Total	337

AB signifies Ashtakbarga score for each of the houses in our chart.

Normal pursuit of any goal will give you a score of 84. Anything less than 84 or more than 84 will indicate that you have a bias in the pursuit of that particular goal, because the sum total of these scores for any chart will always be 337.

The cycle of karma in our life will force us to go through all the experiences and goals in life as revealed by our ordained life script score.

Our life is never linear or black and white, it always has shades of Grey contradictions and they will rear their head, no matter how hard we try to purge them.

Your Ordained Life Script Scores As Per Your Chart:

Pursuits	Scores
Pursuits for 'Dharma' (Vocation)	92
Pursuits for 'Artha' (Wealth)	84
Pursuits for 'Kama' (Sensual pleasure)	84
Pursuits for 'Moksha' (Salvation)	77
Total	337

What does it mean for your life?

There is no explicit value judgment, these scores are based on your karmic destiny. The time, effort and energy you put in something is in proportion to your life script score.

Whenever, the score of any of the pursuit(s) is high or higher than 84 that does not mean that you will achieve immense success in those peculiar pursuit(s), wherein, the high score implies that you ideally neglected that pursuit(s) in your previous lives and in this life you will enjoy or wield it the most.

On other hand, if the score of any of the pursuit(s) is low or lower than 84 that does not mean that you will lack or fail to achieve those goal(s) in life. The low score simply indicates that you over enjoyed or experienced the particular pursuits in your previous lives and in this life you will suffer in those pursuits the most or will simply ignore them.

So far in your life if you have not followed this life script score then planets and their Dasha will definitely trigger events in your life to force you to concentrate on those particular goals.

If you have more or less balanced score (84 or around) in all goals, you will have a balanced life and all 4 goals of life will be in harmony with each other.

“The recipe to be happy and prosperous in this life is to be in flow with your life script score.”

We have now come to the end of the static analysis of your horoscope chart. This is what is called the “Natal Promises” in your chart. This contains the potential of all that is likely to happen in your life. The challenges and Opportunities of each planet and houses in your chart. The question is when the planets will deliver their natal promises in your life. For this Vedic astrology has it’s unique dynamic analysis. From your horoscope chart, the planet periods and sub-periods are computed which is known as Vimsottari Dasha system.

Your Dasha Signature:

Principles of Dasha System:

The Dasha Vichar or planetary periods of Vedic Astrology provide a unique and comprehensive system for judging the effects of planets throughout the development of our lives. They are the most accurate system for showing how the planets distribute their effects through time and the different stages of our lives.

The most common of these systems of planetary periods is the Vimshottari Dasha or the "120-year cycle". This follows a predetermined sequence, the starting point of which is determined by the longitude of Moon at the time of birth. In it, each of the seven major planets plus the two Lunar Nodes are given specific periods. This entire life span is divided into different main periods of planets and within this main period, there are sub-periods of all the planets and then each sub-period can be divided into sub-sub-periods of planets. The effects of the planets become most operative during the Main Dasha or the sub-Dasha. The transit effects and the relation between the Main planet and the sub-planet also determine whether the good effects will be more predominant or the bad ones.

We give your Dasha Table below:

Your Dasha Table

Saturn 19 years		Venus 20 years		Mars 7 years	
Saturn		Venus	12 Mar 1990	Mars	12 Mar 2026
Mercury		Sun	12 Jul 1993	Rahu	8 Aug 2026
Ketu		Moon	12 Jul 1994	Jupiter	27 Aug 2027
Venus		Mars	12 Mar 1996	Saturn	1 Aug 2028
Sun	3 Mar 1957	Rahu	12 May 1997	Mercury	10 Sep 2029
Moon	13 Feb 1958	Jupiter	11 May 2000	Ketu	7 Sep 2030
Mars	14 Sep 1959	Saturn	10 Jan 2003	Venus	4 Feb 2031
Rahu	23 Oct 1960	Mercury	12 Mar 2006	Sun	5 Apr 2032
Jupiter	30 Aug 1963	Ketu	10 Jan 2009	Moon	11 Aug 2032
ends at 12 Mar 1966		ends at 12 Mar 2010		ends at 12 Mar 2033	
Mercury 17 years		Sun 6 years		Rahu 18 years	
Mercury	12 Mar 1966	Sun	12 Mar 2010	Rahu	12 Mar 2033
Ketu	8 Aug 1968	Moon	30 Jun 2010	Jupiter	23 Nov 2035
Venus	5 Aug 1969	Mars	29 Dec 2010	Saturn	17 Apr 2038
Sun	5 Jun 1972	Rahu	6 May 2011	Mercury	21 Feb 2041
Moon	11 Apr 1973	Jupiter	30 Mar 2012	Ketu	11 Sep 2043
Mars	11 Sep 1974	Saturn	16 Jan 2013	Venus	28 Sep 2044
Rahu	8 Sep 1975	Mercury	29 Dec 2013	Sun	29 Sep 2047
Jupiter	27 Mar 1978	Ketu	4 Nov 2014	Moon	23 Aug 2048
Saturn	2 Jul 1980	Venus	12 Mar 2015	Mars	21 Feb 2050
ends at 12 Mar 1983		ends at 11 Mar 2016		ends at 12 Mar 2051	
Ketu 7 years		Moon 10 years		Jupiter 16 years	
Ketu	12 Mar 1983	Moon	11 Mar 2016	Jupiter	12 Mar 2051
Venus	9 Aug 1983	Mars	10 Jan 2017	Saturn	29 Apr 2053
Sun	8 Oct 1984	Rahu	11 Aug 2017	Mercury	10 Nov 2055
Moon	13 Feb 1985	Jupiter	10 Feb 2019	Ketu	15 Feb 2058
Mars	14 Sep 1985	Saturn	11 Jun 2020	Venus	22 Jan 2059
Rahu	10 Feb 1986	Mercury	10 Jan 2022	Sun	22 Sep 2061
Jupiter	28 Feb 1987	Ketu	11 Jun 2023	Moon	11 Jul 2062
Saturn	4 Feb 1988	Venus	11 Jan 2024	Mars	10 Nov 2063
Mercury	15 Mar 1989	Sun	10 Sep 2025	Rahu	16 Oct 2064
ends at 12 Mar 1990		ends at 12 Mar 2026		ends at 12 Mar 2067	

Comments on Dasha Table:

You were born under the main period of Saturn. You had experienced main period of Saturn between 16th November, 1954 till 12th March, 1966, that is around 11 years. Saturn is located in First house from Sun in your natal chart. First house is Pursuit of “dharma” trigger house. Even when you were around 11 years, you had been quite serious in pursuing your studies, as well as you had started forming your own ideas about “What you would like to be in this life” Saturn is exalted in your chart and you should have shown excellence in whatever sports or studies you had undertaken during this period.

Main period of Mercury: 12th March, 1966 till 12th March, 1983:

After the main period of Saturn, you had entered 17 years main period of Mercury in your life. The macro direction of Mercury period in your life again had been Pursuit of Dharma, because Mercury is also in first house from Sun in your natal chart, which is Pursuit of “Dharma trigger” house in your chart. This is the period when you should get married because that is also pursuit of Dharma. You should also be professionally trained and achieve your higher educational qualification for the vocation that you have chosen in your life. You should also start your independent earning during this period, because as per your nature you would like to become independent and would not like to be financially dependent on others be it your father or your husband. You must have your own money and spend your own money.

Main period of Ketu: 12th March, 1983 till 12th March 1990:

Mercury period was followed by 7 years main period of Ketu in your life. The macro direction of Ketu period has been again “Pursuit of Dharma “ However Ketu is in 9th house from Sun in your natal chart. 9th house is Pursuit of” Dharma” seed house in your chart. During this period you should have made a conscious decision to acquire higher knowledge and advanced technique, which will help you to give shape to your vocation better.

Main period of Venus: 12th March, 1990 to 12th March, 2010

During these 20 years, main period of Venus, you will establish yourself completely in your Vocation and in fact you will create an unique Luxury brand dealing with high end life style. You will be known for your creativity and excellence. People beyond your social circle will come to you to take your advice and people will look up to the standards that you have set for yourself in every aspect of your life. Venus is also in First house the Dharma trigger house in your chart.

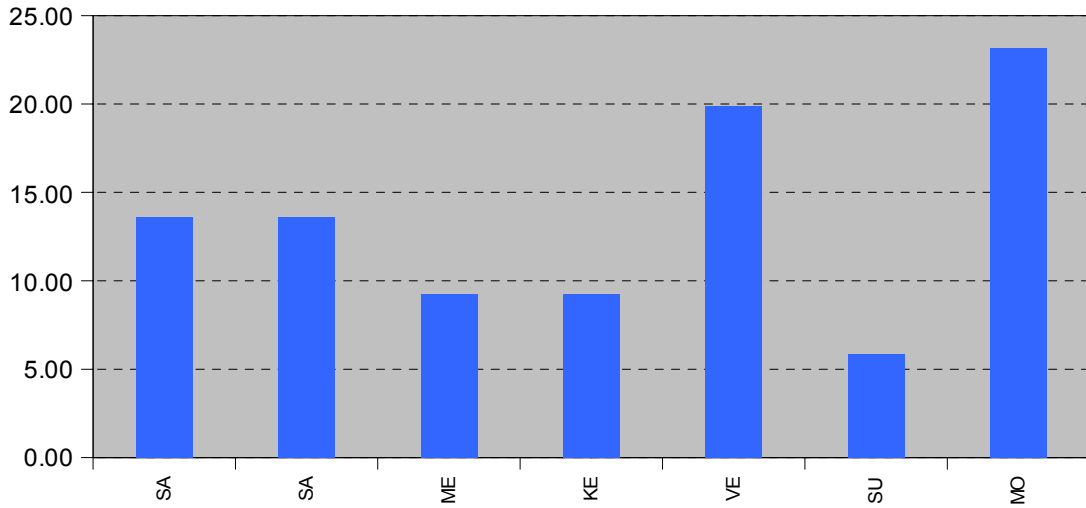
Main period of Sun: 12th March, 2010 to 11th March, 2016:

You are now experiencing the 6 years main period of Sun. The macro direction again is Pursuit of Dharma trigger house in your chart. You will definitely try new things and continue with the new initiatives that you might have started during the later part of main period of Venus. You have to remember Sun is debilitated in your chart and is also the lord of your Ascendant. There will be challenges and obstacles but eventually you will be able to overcome them. However of special significance is you have to be more cautious and careful about your health during the main period of Sun. You have to cut down on the hectic pace of your life and start taking things easy. You have led a full life. It is a time to introspect and look inwards to your true self.

It is also quite possible that you may now decide a completely new direction in which you will still pursue your Vocation, and manifest your true “Dharma” in your life.

This has been a quite a long journey and also eventful journey in your life. There have been challenges, frustrations as well as great moments of Joy and happiness in your life. Given below is a graph which depicts the challenges and opportunities of each main periods of life that you have experienced so far, based on Shadbala and Vimsopak bala of each planet as given in the planet table earlier. We will also include the main periods of Moon, Mars and Rahu that you are most likely to experience during the remaining years of Life.

Benefic Index Across Different Planetary Main Periods of XYZ (1954-2026)



The challenges and Opportunities in life during next 5 years period as per the transits of all planets:

As mentioned earlier, Ashtakbarga report of your horoscope chart gives us the quantitative strength of each planet as they transit from one sign to the next sign. In the table below we are giving you how much each house of your chart will accumulate auspicious and inauspicious points during next 5 years

The Dasha table gives directions in life, but the transit table indicates quantitative values How much challenge and How much opportunity and When exactly during next 5 years in your life. This will help you to decide your strategy and when you must be proactive to take advantage of all opportunities and also when to take it easy and to lie low and accept both the ups as well as downs with calm and detachment.

YOUR TRANSIT TABLE:

From Date	To Date	Soul	Wealth	Efforts	Happiness	Creativity	Disease	Spouse	Windfall	Destiny	Vocation	Desire	Detachment	Karma
		I	II	III	IV	V	VI	VII	VIII	IX	X	XI	XII	NET
01-Aug-2010	31-Jan-2011	-130	331	-226	-82	97	81	-10	140	-79	-142	331	365	280
01-Feb-2011	31-Jul-2011	30	6	230	207	208	663	155	205	328	19	6	969	533
01-Aug-2011	31-Jan-2012	265	51	148	291	-11	478	-41	365	528	-65	51	761	505
01-Feb-2012	31-Jul-2012	525	-178	603	793	-243	447	-230	567	971	178	-178	747	677

01-Aug-2012	31-Jan-2013	-72	-91	39	-152	-249	215	-112	-298	-131	-15	-91	542	221
01-Feb-2013	31-Jul-2013	41	198	424	105	30	526	52	52	468	3	198	830	675
01-Aug-2013	31-Jan-2014	-53	56	78	-77	-97	292	-36	-118	41	-48	56	592	336
01-Feb-2014	31-Jul-2014	-188	209	106	3	140	263	73	15	-1	20	209	565	419
01-Aug-2014	31-Jan-2015	-58	213	-133	89	268	364	113	303	74	-84	213	664	380
01-Feb-2015	31-Jul-2015	4	266	255	311	408	608	220	444	456	23	266	897	677

Best >= 600

Mixed < 600 And >= 200

Average < 200 And >= 30

Worst < 30

Comments:

In the table above you will observe the first 12 columns correspond to 12 houses in your chart. The 13th Column is like a net figure (not an algebraic total) indicates how the period will be considering all the aspects of life. This is an overall picture of your life.

Astrological Remedies:

As mentioned earlier, Vedic astrology also has its technology to maximize the opportunities in life as well as to minimize the challenges in your life during any period in your life

I would recommend *Numeric Surya Yantra* for debilitated Sun in your natal chart. This will harmonize the inauspicious effects of Sun in your life.

You are recommended to strengthen the planet Mercury through Gem Therapy. This will help you to accumulate and save wealth in your life. You should strengthen the planet Mercury by wearing an *Emerald* weighing 4 to 5 carats in potency. It must be mounted on a gold ring and worn on the little finger of your right hand. The gem must be put on first on a Wednesday morning.

On behalf of CyberAstro.Com
Satrajit Majumdar
CEO

[Please read http://www.cyberastro.com/asp/disclaimer.asp](http://www.cyberastro.com/asp/disclaimer.asp)

